



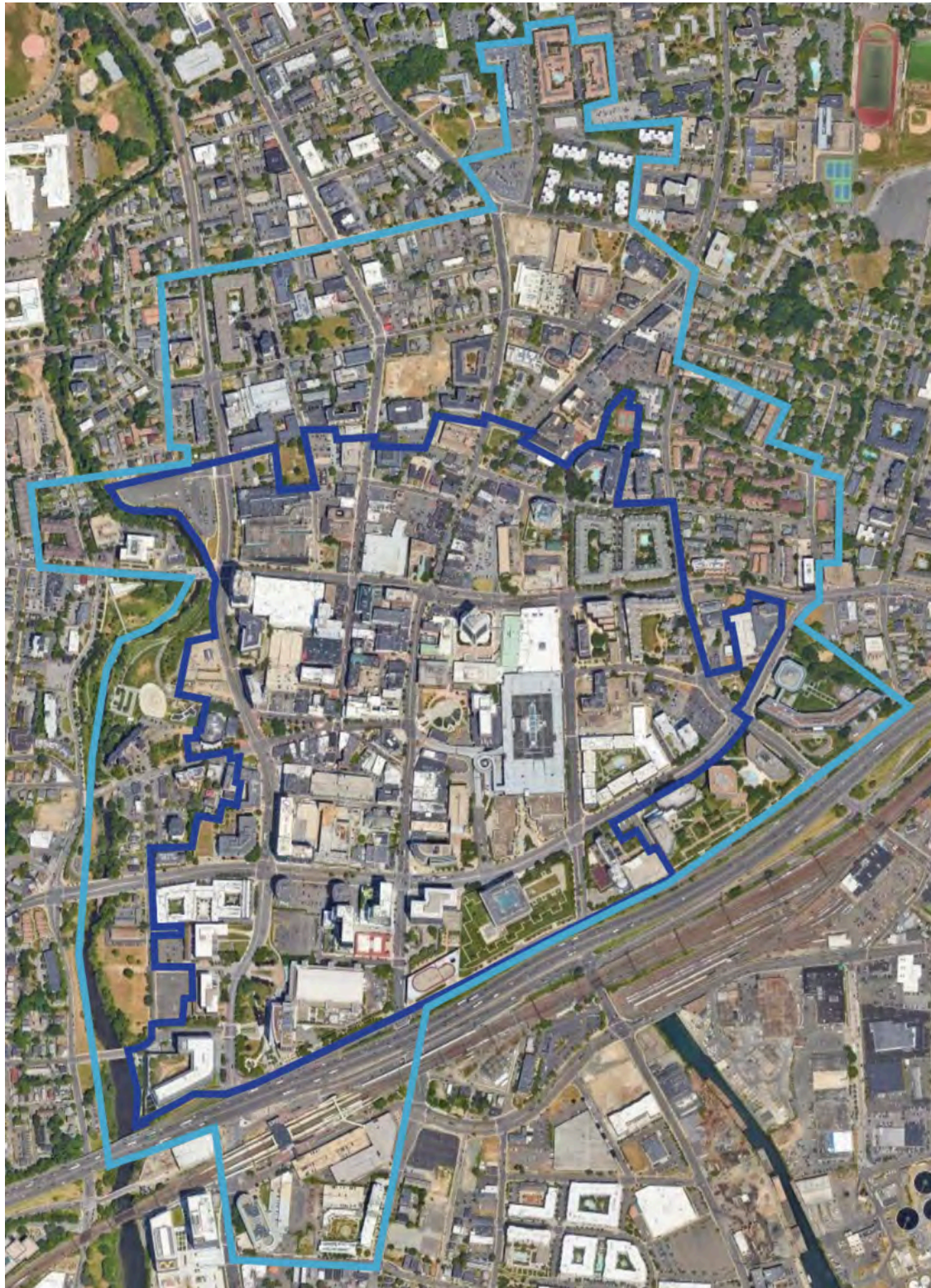
**1996 - NOW**

**DOWNTOWN  
DEVELOPMENT**

**STAMFORD DOWNTOWN  
BUILDING INVENTORY**

**2026**

# STAMFORD DOWNTOWN AND GREATER DOWNTOWN BOUNDARIES



- Stamford Downtown District
- Greater Downtown (outside of District)

# STAMFORD DOWNTOWN SPECIAL SERVICES DISTRICT

## RESIDENTIAL INVENTORY

### 2024 - NOW

Recently Completed	2024 - 2025 Units
The Davenport	27
The Asher	228
1385 Washington* (UConn Stamford Housing)	23
Julius*	376
<b>Total Completed Units</b>	<b>654</b>

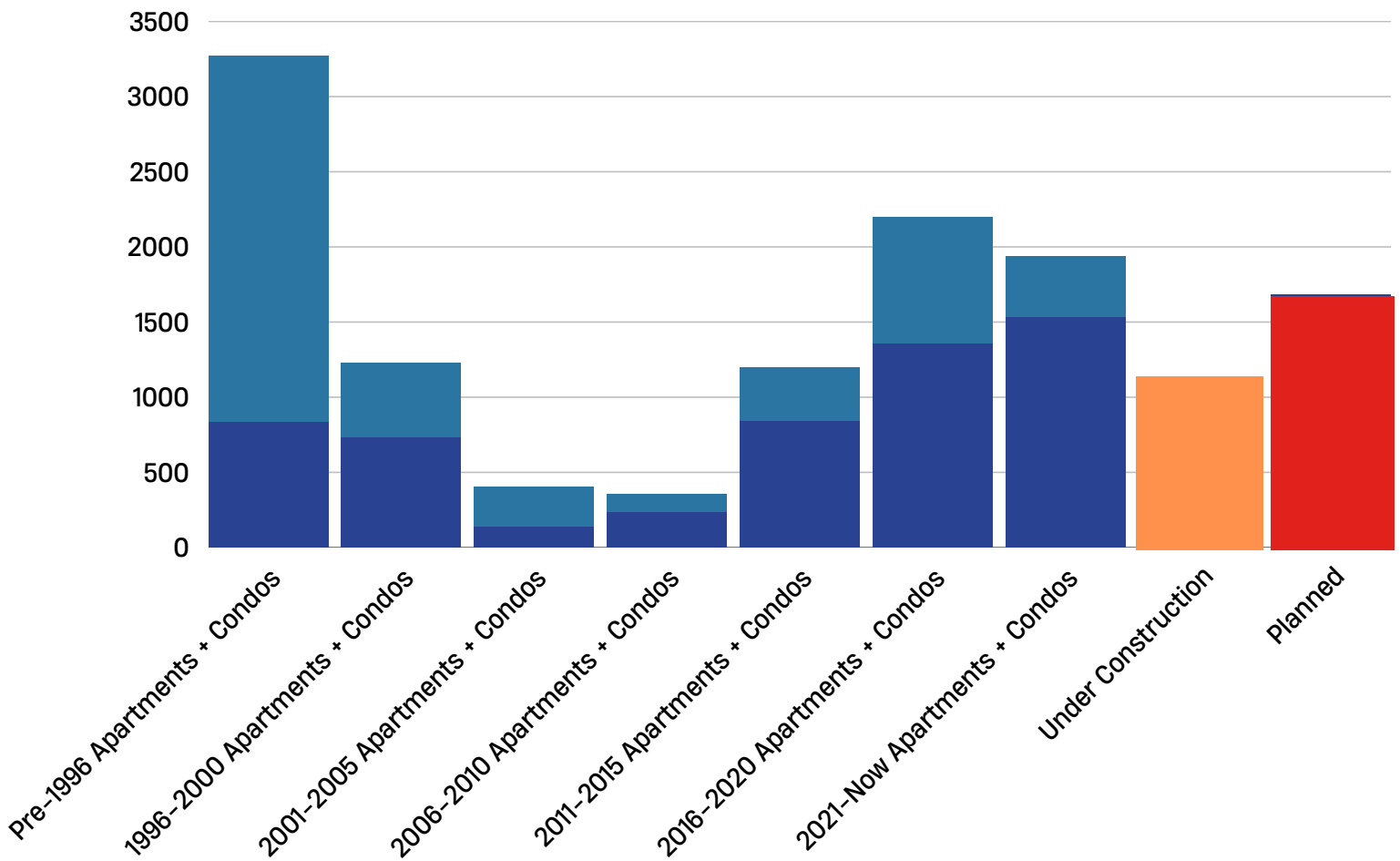
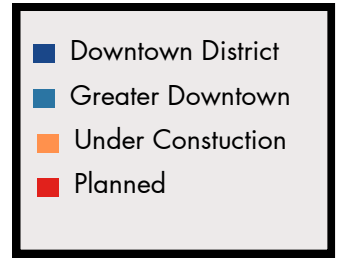
Planned w/Land Use Approvals	2026 Units
0 Walton Place & 80 Prospect*	244
109 Tresser Blvd	305
177 Broad	231
3 Landmark	400
589 Bedford*	21
677-707 Washington	406
780 Summer*	73
<b>Total Planned Units</b>	<b>1,680</b>

Under Construction	2026 Units
100 Clinton*	471
The Coastline	200
400 Main Street	41
460 Summer	40
74 Broad Street	280
<b>Under Construction Units</b>	<b>1,032</b>

\* = in the Greater Downtown (outside of District)

# RESIDENTIAL INVENTORY AT A GLANCE (PRE-1996 - NOW)

## Apartments & Condominiums Built Within Greater Downtown



# APARTMENTS UNITS OPENED

## Pre-1996 - 2026



2026 - the blvd (1201 Washington Blvd) converted from residential to UConn Stamford dorms. 94 units were removed from inventory

# RECENTLY COMPLETED



## **LIFE TIME LIVING STAMFORD**

**130 Tresser Boulevard**

291 residential units and an athletic facility  
ROECO, LLC



## **THE SMYTH**

**100 Tresser Boulevard**

414 residential units and 19,333 sf retail  
Quarterra



## **THE ASHER**

**150 Broad Street**

228 residential units and 8,000 sf office  
RMS Properties



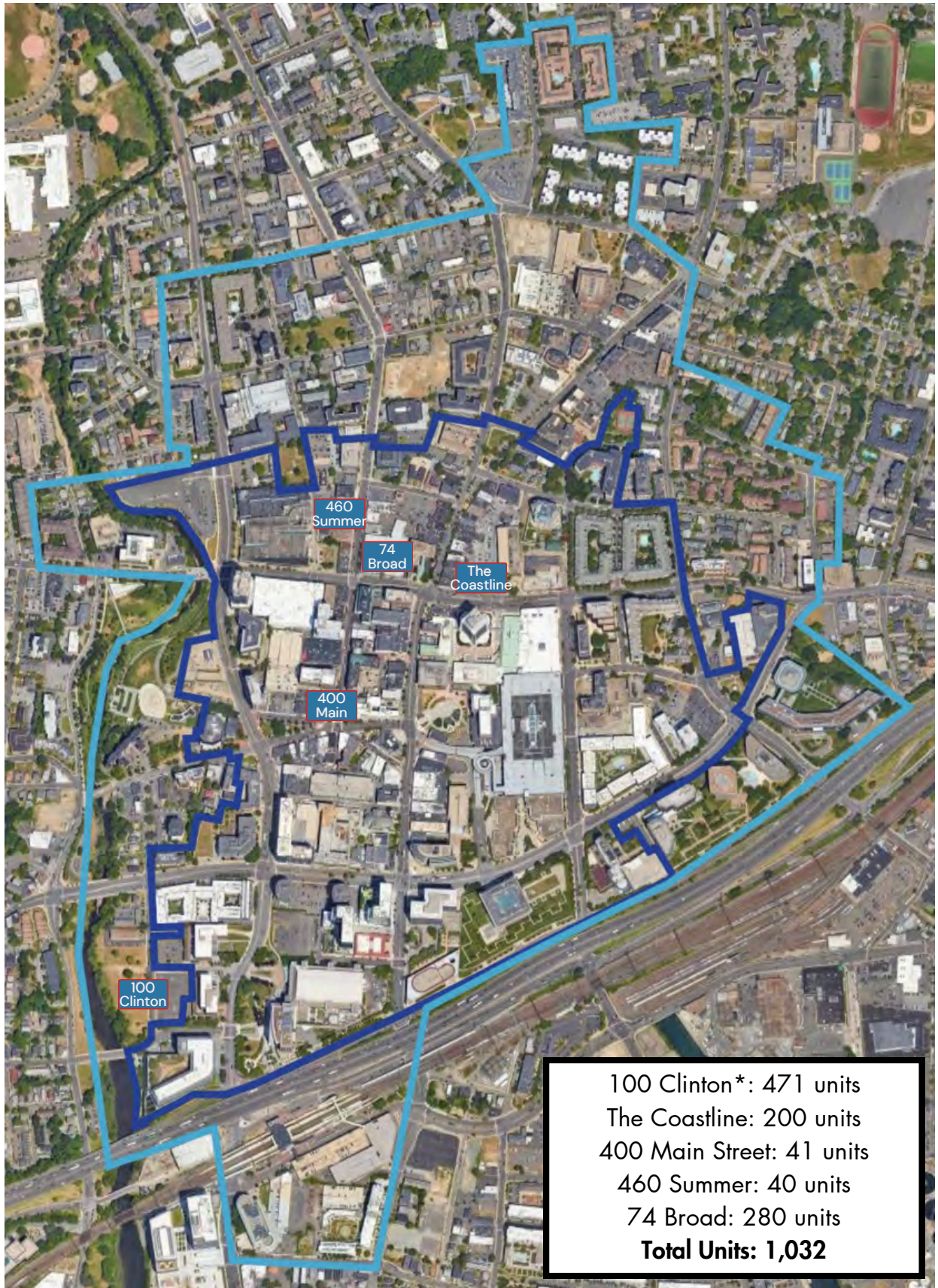
## **JULIUS\***

**777 Summer Street**

376 residential units  
Summer Street Property, LLC

\* = in the Greater Downtown

# APARTMENTS UNDER CONSTRUCTION



\* = in the Greater Downtown

# UNDER CONSTRUCTION



**100 CLINTON\***  
**Division Street / Clinton Avenue**  
471 residential units  
CP VIII 100 Clinton LLC



**THE COASTLINE**  
**130 Broad Street**  
200 residential units  
TR Broad II LLC



**400 Main**  
**400 Main Street**  
41 residential units  
400 Main St LLC



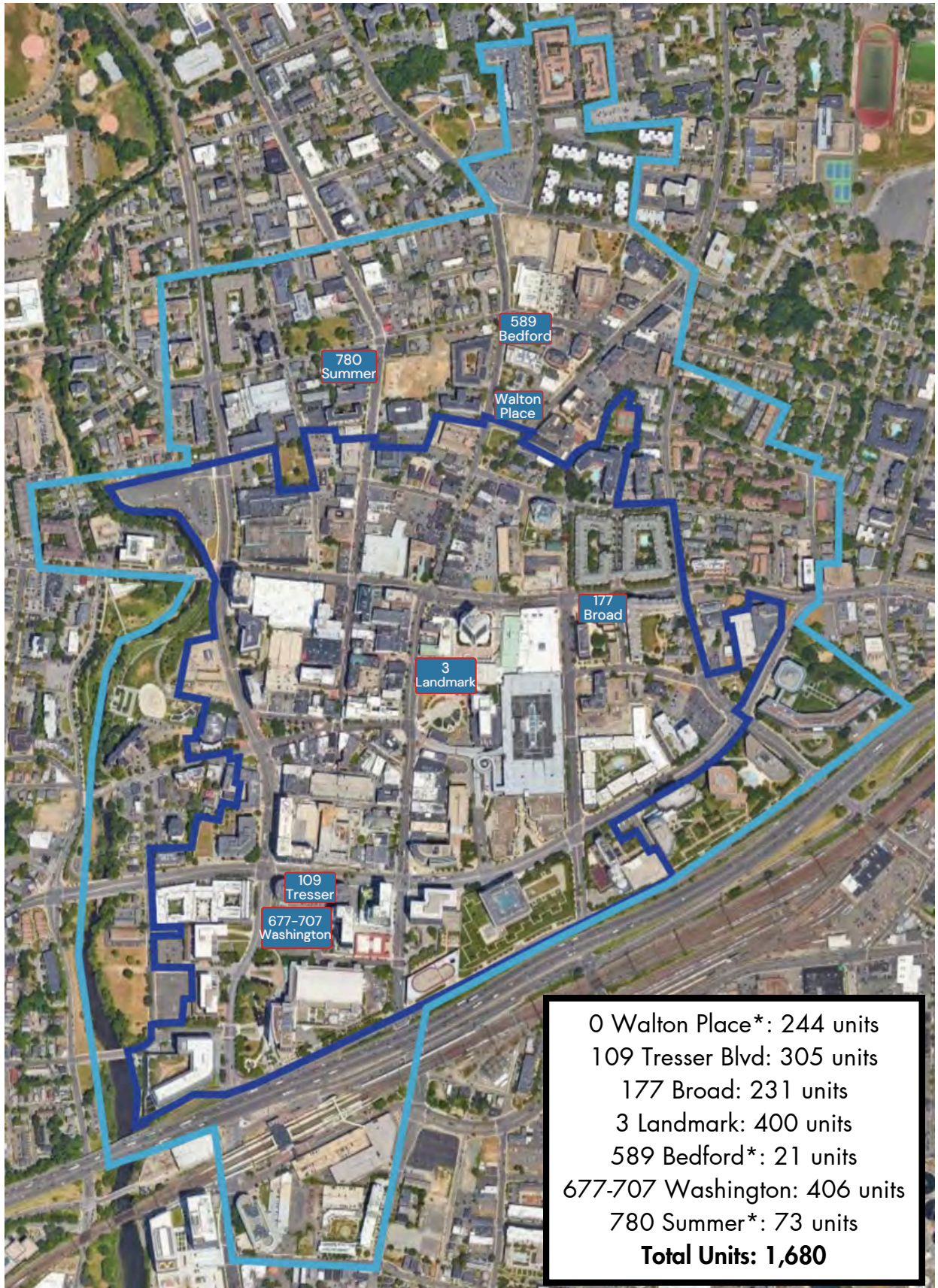
**460 Summer**  
**460 Summer Street**  
40 residential units  
460 Summer Street LLC



**74 Broad**  
**74 Broad Street**  
280 residential units  
and 5,400 sq ft of retail  
RMS 74 Broad Street, LLC

\* = in the Greater Downtown

# APARTMENTS PLANNED WITH LAND USE APPROVALS



\* = in the Greater Downtown

# PLANNED WITH LAND USE APPROVALS



## **0 WALTON PLACE & 80 PROSPECT\***

**0 Walton Place / 80 Prospect Street**

244 residential units

Walton Place LLC and 80 Prospect Street Partners LLC

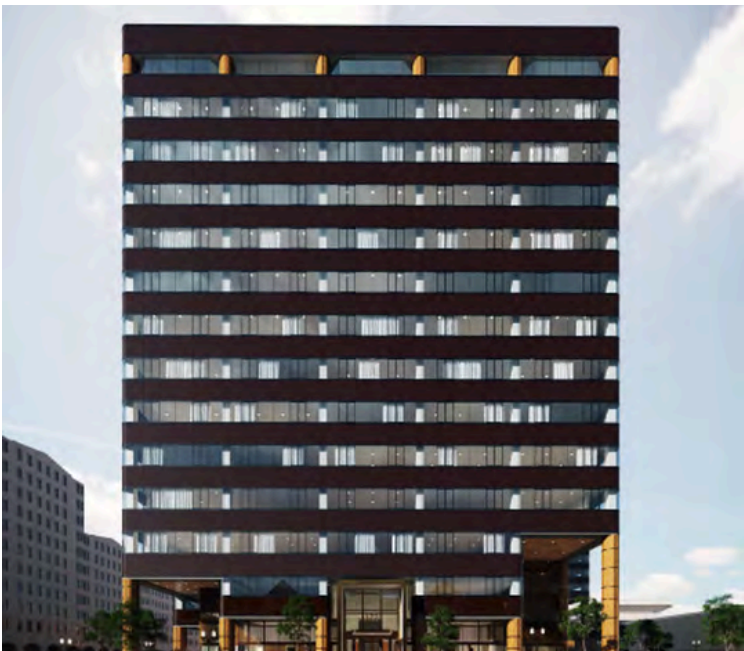


## **109 TRESSER**

**109 Tresser Boulevard**

305 affordable units

St. John Urban Development Corp.



## **177 BROAD**

**177 Broad Street**

228 residential units

RMS Properties



## **3 LANDMARK**

**3 Landmark Square**

400 units and 5,000 sf ground floor retail

Capelli Organization

\* = in the Greater Downtown

# PLANNED WITH LAND USE APPROVALS



**589 BEDFORD\***  
**589 Bedford Street**  
21 residential units  
Aivalis Architects & Developers



**677-707 WASHINGTON**  
**677-707 Washington Boulevard**  
406 residential units  
Stamford Washington LLC



**780 SUMMER\***  
**780 Summer Street**  
73 residential units  
780 Summer St. LLC

\* = in the Greater Downtown

# STAMFORD DOWNTOWN HOTEL OVERVIEW

1996-Now



# PLANNED WITH LAND USE APPROVALS



**OLD TOWNE HOTEL**  
**160 Atlantic Street**  
92 hotel units  
AWA Design Group



**0 WEST PARK PLACE**  
**0 West Park Place**  
99 room extended stay hotel units  
with ground level retail/restaurant space  
Tullamore LLC



**300 MAIN**  
**300 Main Street**  
149 hotel units and restaurant  
TR West Main Street LLC

\* = in the Greater Downtown