

SUMMER 2013



SAC CAPITAL ADVISORS, L.P. PRESENTS  
**DOWNTOWN  
ABSTRACTIONS**

**ART IN PUBLIC PLACES - STAMFORD DOWNTOWN**



A STAMFORD DOWNTOWN  
**OUTDOOR SCULPTURE EXHIBIT**

**Dear Friends:**

It is with great pleasure that we present the 20th annual sculpture exhibit, **Downtown Abstractions**. The exhibit includes a collection of 43 sculptures on loan to the City of Stamford from 18 artists whose works will be on display throughout the Downtown and at the Stamford Town Center.

This commemorative catalogue is a tribute to an extraordinary collaborative process among Stamford Downtown, the City, the corporate community and art aficionados. Our sincere appreciation goes to Ernie Orgera and the City of Stamford's Operational Team. Our many generous participating sponsors are directly responsible for ensuring that our public art program flourishes. A very special thanks to our Presenting Sponsor, SAC Capital Advisors, L.P. for their extraordinary commitment to outdoor art. It is with deep appreciation that we recognize our Gold, Silver, Bronze and Contributing Sponsors: Gold Sponsors: Bar Rosso, Malkin Properties, Reckson, a Division of SL Green Realty Corp., Seaboard Properties, Inc., Stamford Marriott Hotel & Spa, Stamford Town Center; Silver Sponsors: The Campus and 1937 West Main, Emmett & Glander, Attorneys at Law, First County Bank, NBCUniversal, Silver Golub & Teitell LLP; Bronze Sponsors: A. Vitti Construction, Inc., Gibraltar Management Co., Inc., Grade A ShopRite, MarLo Associates, People's United Bank, Purdue Pharma L.P., RBS, RMS Companies, LLC, June & Rolf Rosenthal, Stamford Hospital, UBS; Contributing Sponsors: The Stamford Advocate, Bildner Capital Corp., GB Parking, 95.9 THE FOX, STAR 99.9 and Happyhaha Studio.

Heartfelt thanks to *Eileen Heckerling*, exhibit curator, whose tireless research, energy and ideas were instrumental in making this exhibit a reality and of course our gratitude to the team of artists who loaned their sculptures for this incomparable exhibit.

Come Downtown and enjoy this excellent show.

Sincerely,



*Michael A. Pavia*  
Michael A. Pavia  
Mayor, City of Stamford



*Sandy Goldstein*  
Sandy Goldstein  
President, DSSD



*R*  
Randall M. Salvatore,  
Chairman, DSSD

## ALEX BARRETT

*Alex Barrett has been actively working in metal sculpture since the age of 14. As an apprentice to his father, Bill Barrett, Alex developed the ability to bring an idea to life, gaining an intimate knowledge of fabrication. Unlike most bronze artists, Alex's work is typically not cast, but is created; cut, joined, inflated, and soldered by the artist's hands and then executed on a large scale.*

*Barrett's work is on public display at the University of Chattanooga and at various locations in Santa Fe, New Mexico. He has exhibited in New York and Chicago, as well as Arkansas, Pennsylvania, Alabama, Oklahoma, Tennessee and Switzerland.*



▲  
LYRIC

Sponsored by  
**June & Rolf Rosenthal**

## BILL BARRETT

Bill Barrett, one of today's foremost sculptors, has been exhibiting his unique metal sculptures and abstract paintings in numerous solo and group exhibitions in the US and internationally since the mid 1960's. His sculptures of fabricated aluminum, bronze or steel address the interplay between positive and negative space with grace, elegance and exquisite balance. His bronzes have been compared to "music in metal."

He has had numerous solo and duo shows, mostly recently in Santa Fe, Boca Raton and New York City, as well as group exhibitions in Italy, Germany, Japan and Bulgaria. His work is in museum collections including the 911 Memorial and Museum in New York, the Aldrich Museum in Ridgefield, CT, the Cleveland Museum of Art and dozens more, as well as numerous municipal and university collections. Barrett is frequently called upon to produce large-scale sculpture by commission including Best Products Corp., Dell Corporation, Austin; Hitachi Corp, Japan; Neiman Marcus Dallas; Saint Vincent Hospital, Santa Fe, among many.



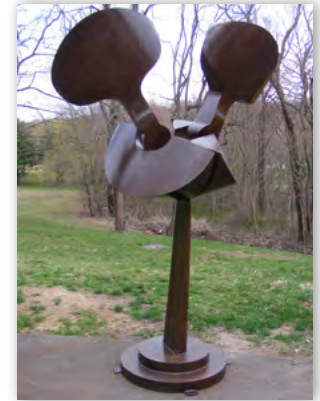
▲ ISIS II

Sponsored by  
**Stamford Town Center**

## DAVID BOYAJIAN

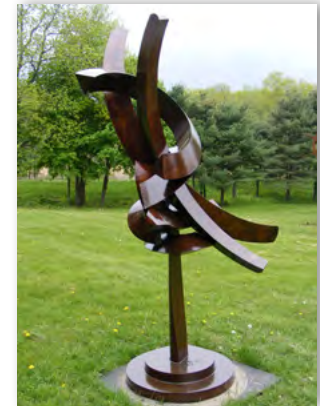
Born and raised in CT, David Boyajian received his B.F.A. from Alfred University and M.F.A. from the Rhinehart School of Sculpture in MD. He is a Co-Founder of the Sculpture Barn in New Fairfield, CT and former Director of Sculpture Studies at Silvermine School of Art in New Canaan, CT. He has taught extensively at numerous colleges and universities throughout the state. His large-scale steel sculptures of graceful sweeping curves amid complex seed forms seem to grow out of the landscape they were designed at and for.

An award winning sculptor, Boyajian has won dozens of commission projects both public and corporate and has exhibited extensively at museums and sculpture parks including the Robert Moses Sculpture Garden at the Lincoln Center Campus of Fordham University in NYC, and numerous private collections including Pepsico in Purchase, NY, the Maritime Museum in Norwalk, CT, and the homes of Dr. Ruth Westheimer in NYC and President and Mrs. George H.W. Bush in Kennebunkport, among others.



▲ DICOTYLEDON

Sponsored by  
**Gibraltar Management Co., Inc.**



▲ UNFURLING

Sponsored by  
**Bar Rosso**



◀ UNFURLING WITH SEEDS

Sponsored by  
**Stamford Town Center**

## CURT BRILL

Born in the Bronx, New York, Curt began his serious pursuit of an art career while attending Cornell University. His work there showcased drawings, ceramic work and silk screening. While drawing has been his first and enduring love, professionally he has been most noted for his widely collected 3 dimensional work – ceramics and bronze. Being a people watcher with a keen eye, a potent sense of humor and an easy demeanor, it is easy to see how his personal style has evolved. His work has now been met with wide appeal by individual collectors within the United States, Europe and Japan. Along with Stamford, upcoming exhibits include Japan and Florida.



▲  
**BRANDI**  
Sponsored by  
**The Campus and 1937 West Main**

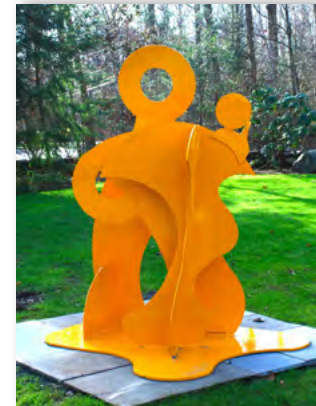
## CAROLE EISNER

Painter and sculptor, Carole Eisner has worked with scrap and recycled metal for 40 years, creating elegant, abstract forms welded in steel. Her larger-than-life works and small scale sculptures have been exhibited in dozens of public parks, corporate plazas, cultural centers, museums and waterfronts all along the northeast corridor in Connecticut, New York, Massachusetts, New Jersey and Florida, as well as in Belgium, France and Japan.

Eisner is represented in private, public and corporate collections, including the Guggenheim. She currently has a monumental sculpture in Tramway Plaza in Manhattan at the entrance and exit to the Roosevelt Island Tram.



▲  
**BIRDSONG**  
Sponsored by  
**RBS**



▲  
**KONNECTED**  
Sponsored by  
**First County Bank**



◀ **VALENTINE TWO**  
Sponsored by  
**Stamford Marriott  
Hotel & Spa**

## DENIS FOLZ

Born in Wausau, WI, Denis Folz left for NYC to attend the Fashion Institute of Technology where he received his Bachelor's Degree in Fine Arts. He went on to work and study painting with Ertugrul Ates (master painter from Turkey). Folz worked as a designer through the 80's and most of the 90's. He relocated to Connecticut and began sculpting under the direction of David Boyajian in 2009 at the Connecticut based Sculpture Barn. "My Sculptures," he says, "are more about the space they take from their surroundings." He has exhibited widely throughout the state. He currently has several sculptures on loan at the Governor's residence in Hartford, CT.



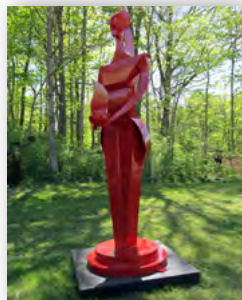
▲  
**BROKEN LINES**  
Sponsored by  
**Bar Rosso**



▲  
**SEA WALL**  
Sponsored by  
**Reckson, a Division of  
SL Green Realty Corp.**



▲  
**SPROUT**  
Sponsored by  
**Bildner Capital Corp. & GB Parking**



▲  
**PROUD WOMAN**  
Sponsored by  
**Seaboard Properties, Inc.**

## JENNIFER GEORGE

Jennifer George brings a sense of passion, spirit and joy to all of her endeavors. Working out of the Sculpture Barn in New Fairfield, CT, Ms. George has been creating metal sculpture in bronze, steel and glass for the past two years. Her work is inspired by the symbolic and iconic elements of nature: earth, air, fire and water. These elements are transformed into sculptural forms through a poetic narrative. Sometimes these narratives are abstract thoughts and visions of verse, simple and to the point, other times these narratives take on a symbolic realism that speaks to cultural unity as symbols of identity and strength.

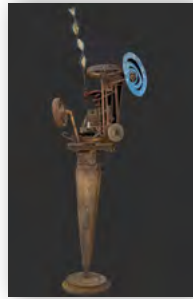


▲  
**CLARITY**  
Sponsored by  
**Malkin Properties**

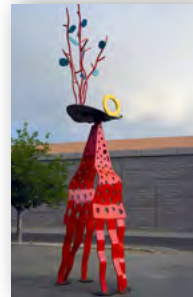
## ED HADDAWAY

Born in Fort Worth, Texas, Ed Haddaway received a Bachelor's degree in Fine Arts at the University of New Mexico. After travelling around the country and doing graduate work in Texas, he decided to buy tools and get to work. He has been making prints and sculptures ever since. His work has been exhibited extensively around the country, is found in galleries and museums, and he has completed a number of public commissions.

Ed says, "I have been making things for as long as I can remember. The backyard of my childhood is littered with old lumber, hammers, nails, and holes, just for the fun of it."



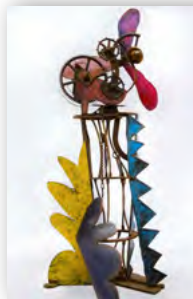
▲  
**APPARATUS DU MESMER**  
Sponsored by  
**Stamford Downtown**



▲  
**FROM THE HOUSE WHERE THE  
WOULD-BE SHADOW LIVES**  
Sponsored by  
**NBCUniversal**



▲  
**MEETING MR. WOLFE**  
Sponsored by  
**Emmett & Glander, Attorneys at Law**



▲  
**THE REINVENTION OF  
BROKEN DREAMS**  
Sponsored by  
**Grade A ShopRite**

## DAVID HOSTETLER

For 65 years, David Hostetler's reputation as a celebrated sculptor has grown exponentially. His works appear in over twenty-five museums and galleries, including the Museum of Fine Arts in Boston, Massachusetts, Grounds for Sculpture in Hamilton, New Jersey, and the DeCordova Museum in Lincoln, Massachusetts. Hostetler's pieces grace numerous public collections from New Mexico to Nantucket to the Netherlands, and have been featured in films, on television, and in newspapers and magazines. Hostetler's unique treatment of the feminine form has earned him wide acclaim cross-culturally.

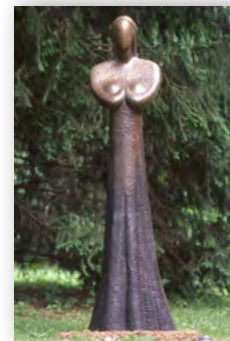
He is the creator of a series of captivating and original works in exotic wood and bronze that honor and celebrate the female form.



▲  
**EFFIGY II**  
Sponsored by  
**Seaboard Properties, Inc.**



▲  
**THE DUO**  
Sponsored by  
**People's United Bank**



▲  
**ASHERAH II**  
Sponsored by  
**Bar Rosso**



▲  
**MONUMENTAL CYCLADES**  
Sponsored by  
**Seaboard Properties, Inc.**

## HOWARD KALISH

Pursuing studies in art and sculpture, Howard Kalish attended Cooper Union and the New York Studio School. He has been featured in numerous one-person shows and group exhibitions. His works are also included in many public art collections nationally, including the Navy Pier, Chicago; Socrates Sculpture Park, NY; Station Plaza Sculpture Walk, NJ among many. In addition to exhibiting his sculpture, he has curated exhibits, and taught at several institutions, including fifteen years at the National Academy of Design in New York City. He describes his work as being about "Growth and structure, the various ways forms are put together and become themselves, in nature and the way we see it."



▲  
**KNOT**  
Sponsored by  
**A. Vitti Construction, Inc.**

## JOSEPH KINNEBREW

Born in Tacoma, WA, Joseph Kinnebrew is an internationally recognized sculptor, painter and author whose work is in the collections of major museums and many well-established private collections. His work has been exhibited at the Biennale in Florence, Italy, the Palm Beach Biennale and The Walter Wickiser Gallery in New York, among others.

Kinnebrew's digital collages represent his continuing commitment to work that reflects the thoughts and observations of an important, mature, contemporary artist working across a wide range of media. New York Times critic William Zimmer has said, "His work is the 800-pound gorilla, impossible to ignore."



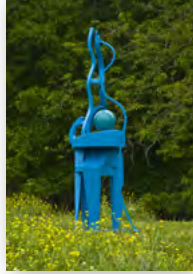
◀ **BALANCING ACT**  
Sponsored by  
**Purdue Pharma L.P.**

**MEMORIALIZING MEMORY**  
Sponsored by  
**Reckson, a Division of  
SL Green Realty Corp.**

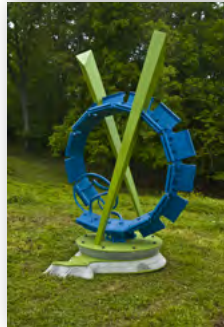


## JOEY MANSON

Joey Manson grew up traveling extensively, living in major cities abroad and in rural South Carolina. His background and interests led him towards studies in art where sculpture became his primary interest. He lives and maintains a studio practice on a small farm between Clemson and Six Mile while holding a faculty position at Clemson University in SC. He received his M.F.A. from Alfred University and B.F.A. from Clemson. Manson works with industrial materials, often depicting the natural environment. "My sculpture," he says, "becomes an exploration of the built environment and systems ecology." His work has been exhibited in the Chicago Sculpture Exhibit and Rosen Outdoor Sculpture Competition.



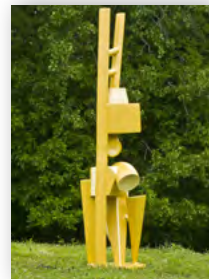
▲  
**CARRY FORWARD**  
Sponsored by  
**Stamford Downtown**



▲  
**NEW AGAIN**  
Sponsored by  
**Malkin Properties**



▲  
**SPLIT**  
Sponsored by  
**Silver Golub & Teitell LLP**



▲  
**SHIFT**  
Sponsored by  
**Stamford Downtown**

## JOHN MERIGIAN

John Merigian grew up in urban Detroit in the midst of which he developed a passion for art, sculpture in particular. His work is centered on the human figure as a means to express internal and external realities and relationships. It often involves multiple figures, with the placement of the figures being choreographed in close connection to the site.

In their simplicity, the figures are accessible. Recent site specific public works include "Plaza Promenade" (2009) and "A Four Phrase Movement" (2010). Two monumental sculptures were permanently installed in 2011: in Cassopolis, MI, and in Lacks Park, Grand Rapids, MI.



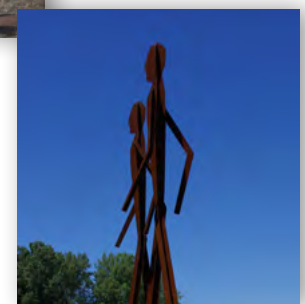
◀ **BE STILL AND KNOW**  
Sponsored by  
**RMS Companies, LLC**



◀ **HOMAGE TO  
L' HOMME QUI  
MARCHE**  
Sponsored by  
**Reckson, a Division  
of SL Green Realty  
Corp.**



▲  
**A REFLECTIVE JOURNEY II**  
Sponsored by  
**Stamford Hospital**



▲  
**AN INTIMATE STROLL**  
Sponsored by  
**Malkin Properties**



## REUBEN NAKIAN

Reuben Nakian was a giant of twentieth-century modernist American sculpture. His art-historical stride extended from an apprenticeship with Paul Manship and a studio assistantship with Gaston Lachaise, to his role as a major participant in the discourse surrounding Abstract Expressionism, particularly with Arshile Gorky and Willem DeKooning. During his seventy-five year career as an artist, he established a profound oeuvre based almost entirely on energetic, daring, and often-erotic abstractions of the female figure. A prolific sculptor in stone, terra cotta, plaster, steel, and bronze, Nakian remained a vital creative force until his death in 1986.

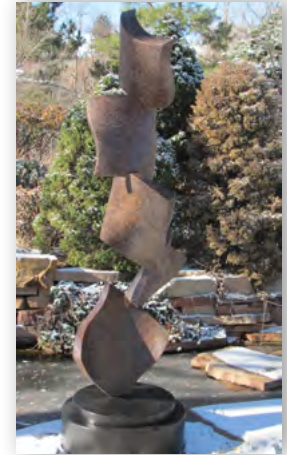


▲  
SEA RHAPSODY  
Sponsored by  
**Stamford Downtown**

## KEVIN ROBB

Over the past three decades, renowned Colorado metal sculptor Kevin Robb has made his mark on the national and international art scene. With a unique style and consummate welding quality that have defined and differentiated his work.

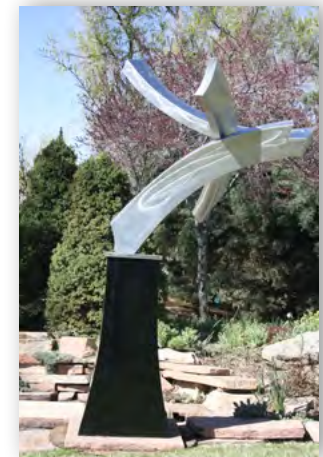
Today, Kevin Robb creates contemporary stainless steel and bronze sculptures, magnificent works crafted by Kevin since he suffered a massive stroke in 2004. Although challenged physically in the creation of his sculptures, his ideas remain free flowing and his commitment to quality is as high as ever - with a resolve that offers a physical testament to the dedication, expertise, and amazing recovery of this remarkable artist.



▲  
SCATOLE  
Sponsored by  
**MarLo Associates**



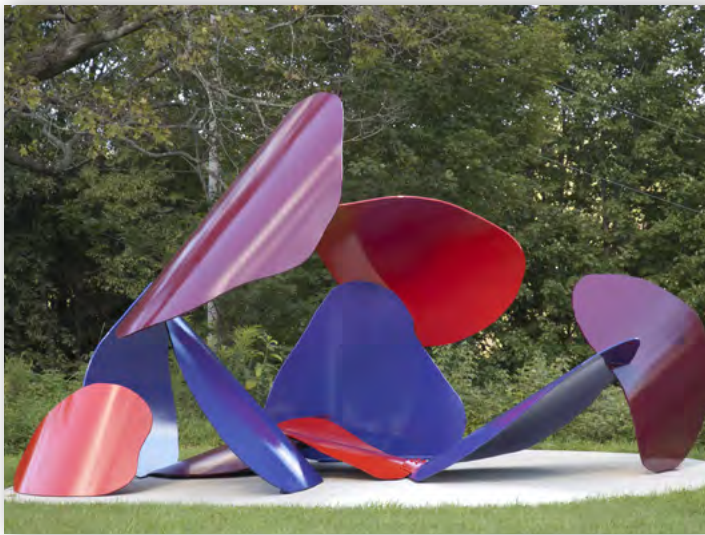
▲  
BUILDING BLOCKS  
Sponsored by  
**UBS**



▲  
VALMORA  
Sponsored by  
**First County Bank**

## DAVID STROMEYER

David Stromeier is a nationally recognized Vermont and Texas based artist known for his large-scale, abstract and colorful sculptures. Stromeier's current solo show of four major outdoor works at the Emerson Umbrella Center for the Arts in Concord, MA will run for a year. His sculpture is in museum, municipal, university, corporate and private collections across the country, including the National Museum of American Art in Washington, DC. He has exhibited widely including exhibits in Charleston, Boston, and New York City. "Fugue" is inspired by the rhythms, patterns, and their implied movement in a three voice fugue.



▲  
**FUGUE**  
Sponsored by  
**NBCUniversal**

## BOAZ VAADIA

Born in Israel, Boaz Vaadia is an internationally known sculptor who works primarily in stone and bronze. He moved to New York in 1975 from Israel to fulfill a grant from the America-Israel Cultural Foundation. He studied at the Pratt Institute and embarked on an illustrious career as a sculptor in NY where he lives.

Vaadia's impressive body of work is included in many private collections, galleries and museums including the Time Warner Center in New York City, the Metropolitan Museum of Art in New York, the Museum of Modern Art in San Francisco, Hakone Museum in Japan and the Israel Museum in Jerusalem.



◀ **BA'AL WITH CAT**  
Sponsored by  
**The Campus and  
1937 West Main**



**YIZHAQ WITH CAT** ▶  
Sponsored by  
**SAC Capital Advisors, L.P.**

## JULIAN VOSS-ANDREAE

Julian Voss-Andreae is a German-born sculptor based in Portland, OR. Starting out as a painter, he later changed course and studied physics at the universities of Berlin, Edinburgh and Vienna. He pursued graduate research in quantum physics, participating in a seminal experiment demonstrating quantum behavior for the largest objects thus far.

He moved to the U.S. in 2000 with his passion for art rekindled and graduated from Art College in 2004, quickly gaining critical attention. His sculpture is heavily influenced by his background in science, capturing the attention of multiple institutions and collectors in the U.S and abroad. Recent commissions include the Scripps Institute and Rockefeller University.



▲  
UNRAVELING COLLAGEN

Sponsored by  
**NBCUniversal**

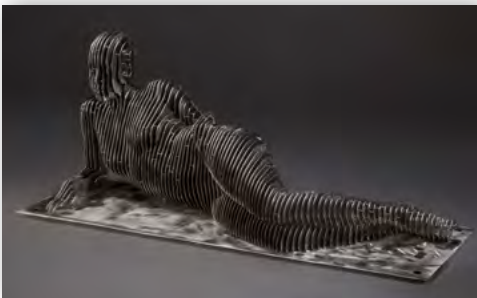


▲  
CUBIST WOMAN

Sponsored by  
**SAC Capital Advisors, L.P.**

▼  
RECLINING WOMAN  
(SPHINX)

Sponsored by  
**SAC Capital Advisors, L.P.**



# ARTWALK

IN

## STAMFORD DOWNTOWN

FRIDAY, JUNE 14 (6PM-9PM) AND SATURDAY, JUNE 15 (10AM-7PM) 2013



OVER 25 PARTICIPATING STORES AND GALLERIES  
VISIT [WWW.STAMFORD-DOWNTOWN.COM](http://WWW.STAMFORD-DOWNTOWN.COM) FOR DETAILS AND ROUTE MAP



**SCULPTURE EXHIBIT MAP**

- |  |                                    |
|--|------------------------------------|
| <b>ALEX BARRETT</b>                                  | <b>HOWARD KALISH</b>               |
| 1 Lyric  | 23 Knot                            |
| <b>BILL BARRETT</b>                                  | <b>JOSEPH KINNEBREW</b>            |
| 2 Isis II  | 24 Balancing Act                   |
|  | 25 Memorializing Memory            |
| <b>DAVID BOYAJIAN</b>                                | <b>JOEY MANSON</b>                 |
| 3 Dicotyledon  | 26 Carry Forward                   |
| 4 Unfurling  | 27 New Again                       |
| 5 Unfurling with Seeds                               | 28 Shift                           |
|  | 29 Split                           |
| <b>CURT BRILL</b>                                    | <b>JOHN MERIGIAN</b>               |
| 6 Brandi   | 30 Be Still and Know               |
| <b>CAROLE EISNER</b>                                 | 31 Homage to L'Homme<br>Qui Marche |
| 7 Birdsong   | 32 An Intimate Stroll              |
| 8 Konected   | 33 A Reflective Journey II         |
| 9 Valentine Two                                      |                                    |
| <b>DENIS FOLZ</b>                                    | <b>REUBEN NAKIAN</b>               |
| 10 Broken Lines                                      | 34 Sea Rhapsody*                   |
| 11 Proud Woman                                       |                                    |
| 12 Sea Wall  | <b>KEVIN ROBB</b>                  |
| 13 Sprout  | 35 Building Blocks                 |
| <b>JENNIFER GEORGE</b>                               | 36 Scatole                         |
| 14 Clarity   | 37 Valmora                         |
| <b>ED HADDAWAY</b>                                   | <b>DAVID STROMEYER</b>             |
| 15 Apparatus du Mesmer                               | 38 Fugue                           |
| 16 From the House Where the<br>Would-Be Shadow Lives | <b>BOAZ VAADIA</b>                 |
| 17 Meeting Mr. Wolfe                                 | 39 Ba'al with Cat                  |
| 18 The Reinvention of Broken<br>Dreams               | 40 Yizhaq with Cat                 |
| <b>DAVID HOSTETLER</b>                               | <b>JULIAN VOSS-ANDREAE</b>         |
| 19 Asherah II  | 41 Cubist Woman                    |
| 20 The Duo   | 42 Reclining Woman (Sphinx)        |
| 21 Effigy II   | 43 Unraveling Collagen             |
| 22 Monumental Cyclades                               |                                    |

# DOWNTOWN ABSTRACTIONS

**\*PERMANENT SCULPTURES IN  
STAMFORD DOWNTOWN**

- JOHN BLAIR**  
A Seated Lincoln
- BRIAN CLARKE**  
B The Stamford Cone
- J. SEWARD JOHNSON**  
C Uninvited Advice
- JAMES KNOWLES**  
D Dancing Girl
- PRINCE MONYO**  
E Mommy's Shoes
- MILHAILESCU-NASTUREL**  
F Hecuba
- REUBEN NAKIAN**  
G Minerva
- MARTHA PETTIGREW**  
H Sea Odyssey
- I Gossip**

**ART IN PUBLIC PLACES  
STAMFORD DOWNTOWN**



ACKNOWLEDGEMENTS

PRESENTING SPONSOR

S | A | C

Capital Advisors, L.P.

GOLD SPONSORS

- Bar Rosso
- Malkin Properties
- Reckson, a Division of  
SL Green Realty Corp.
- Seaboard Properties, Inc.
- Stamford Marriott Hotel & Spa
- Stamford Town Center

BRONZE SPONSORS

- A. Vitti Construction, Inc.
- Gibraltar Management Co., Inc.
- Grade A ShopRite
- MarLo Associates
- People's United Bank
- Purdue Pharma L.P.
- RBS
- RMS Companies, LLC
- June & Rolf Rosenthal
- Stamford Hospital
- UBS

SILVER SPONSORS

- The Campus and 1937 West Main
- Emmett & Glander, Attorneys at Law
- First County Bank
- NBCUniversal
- Silver Golub & Teitell LLP

CONTRIBUTING SPONSORS

- Bildner Capital Corp.
- GB Parking

CURATOR

Eileen Heckerling

TECHNICAL DIRECTOR

Andrew Munce

INSTALLATION TEAM  
CITY OF STAMFORD

- Ernest Orgera, Director of Operations
- Douglas Hoyt, Operations Supervisor
- Hanlet Castillo
- Ralph Socci
- Dennis Surmaczewicz
- Ed Whitehead



This is the  
**Place!**  
stamford-downtown.com



Michael A. Pavia, Mayor



**STAMFORD DOWNTOWN SPECIAL SERVICES DISTRICT**

Five Landmark Square, Suite 110

Stamford, CT 06901

Ph (203) 348-5285 | Fx (203) 348-6857