



# the Stamford DOWNTOWNER



NUMBER 46 • SPRING 2013

## LETTER FROM THE PRESIDENT, SANDY GOLDSTEIN

### We Keep on Growing



Few, if any, cities in the country can claim the growth that Stamford has experienced during the course of these last few years. From the Downtown to the South End to the Westside of town, construction cranes have become an integral part of the landscape—a sure metaphor for dynamic growth. Happily, the Downtown has a significant economic development story to tell:

- 390 new residential units under construction.
- 268 additional units to begin construction in Spring 2013.

- The Mill River Park with its grand opening gala and summer events set to commence in May.
- An enhanced entertainment season for 2013/14 at the Palace Theatre.
- An expanded calendar of spectacular shows scheduled for this summer at Alive@Five and Jazz Up July.
- The dynamic outdoor sculpture exhibit, Downtown Abstractions, presented by SAC Capital Advisors, L.P. slated to run through the Summer.
- The installation of a huge 31x41 *trompe l'oeil* mural to be attached to the southern-facing wall of First County Bank on Atlantic St.
- A brand-new Art Walk in mid-June.

Hence, a very active summer and fall, which will require insight regarding where to park, especially when events and construction somewhat change the parking environment. Remember, once you know what is going on and where to park—parking will be as easy as ever!

On or about May 1st, construction will begin on a 210-unit apartment complex on Summer Street on the site of the outdoor parking lot that abuts the Majestic Theatre. In addition, the parking lot on Main Street, adjacent to Curley's diner, will be the staging area for the construction. It will therefore be closed for parking during the construction period. So, where do you park during this construction?

There are over 9,500 parking spaces in more than 15 convenient downtown locations. If you follow the Orange Parking signs, which will be on display throughout the Downtown, you will find parking easily. When construction of the apartments is completed, (an 18 month project) a newly expanded Summer Street garage will add even more parking spaces to the Downtown. The map on page 2 will help you find 15 convenient garages and parking areas within close proximity to everything you want to do in the Downtown. Remember there is still on street metered parking which is \$1 an hour (9 am to 6pm and free all day Sunday). Then, just follow the orange signs!!! (See parking map and directory on page 2).



Park Square West Phase 1

PRESORTED  
FIRST CLASS  
US POSTAGE  
PAID  
STAMFORD CT  
PERMIT NO 734



Stamford Downtown  
Special Services District  
Five Landmark Square  
Suite 110  
Stamford, CT 06901

### WHAT'S INSIDE?

<i>Letter from the President.....1</i>	<i>DSSD Ambassador - Spotlight on Bob Cornell .....3</i>
<i>Jami Sherwood: 2012 City of Stamford Citizen of the Year2</i>	<i>Downtown Abstractions .....3</i>
<i>"Blazing Blooms" .....2</i>	<i>2013 Event Schedule .....4</i>
<i>Retail Corner: New Retailers and Restaruantns in Stamford Downtown.....3</i>	

# Board of COMMISSIONERS

## Chairman

Randall M. Salvatore, President  
RMS Companies, LLC

## Vice Chairman

Reyno A. Giallongo, Jr., Chairman & CEO  
First County Bank

## Treasurer

Kathryn Emmett, Esq.  
Emmett & Glander

## Secretary

Greg Caggainello, Sr. Vice President  
Reckson, a Division of SL Green

## Immediate Past Chair:

Stephen J. Hoffman, Managing Partner  
Hoffman Investment Partners LLC

Fernando Luis Alvarez

Fernando Luis Alvarez Gallery

Laure Aubuchon, Director  
Office of Economic Development, City of Stamford

Goitom Bellete, President  
GB Parking

Carl Bildner, President  
Bildner Capital Corp.

George Boyce  
State Farm Insurance Co.

Norman Cole, Acting Land Use Bureau Chief  
City of Stamford

Jack Condlin, President & CEO  
Stamford Chamber of Commerce

Mgr. Stephen DiGiovanni  
Basilica of St. John the Evangelist

John J. DiMenna, Jr., President  
Seaboard Properties, Inc.

Rachel Goldberg, Interim Director/General Counsel  
Urban Redevelopment Commission

Robert H. Kahn, President  
United Realty, Inc.

Robert Karp, President  
BE Rep Group

Meredith Keeler, General Manager  
Stamford Town Center

David M. Kooris, Unit Owner  
Classic Condominiums

Todd M. Kosakowski, Managing Partner  
Post Road Entertainment

Gregory Lodato, President  
MarLo Associates, Inc.

Norman Lotstein, Vice President  
Pyramid Real Estate Group

Michael Marchetti  
Columbus Park Trattoria

Frank J. Mercede, President & CEO  
Frank Mercede & Sons, Inc.

Marjan Murray  
Sr. Vice President, Tri-State Market Manager  
People's United Bank

Robert Musumeci, President  
RTA International, Inc.

Courtney A. Nelthropp, Owner  
Sir Speedy

Michael A. Pavia, Mayor  
City of Stamford

Andrew Rowley, Head of Communication & Marketing  
The Royal Bank of Scotland Group

Mary Schaffer  
napa & co.

Randall M. Skigen, President & Deputy Mayor  
Stamford Board of Representatives

Merle Spiegel, Senior Director of Corporate Communications  
Purdue Pharma L.P.

Sharon White, Associate Vice Provost  
University of Connecticut - Stamford

Tracie Wilson  
Sr. Vice President of Programming and Development  
NBC Universal

Steven Wise  
Steven Wise Associates, LLC

Sandy Goldstein, President

Lynne Colatrella  
Vice President, Events & Marketing

John Ruotolo  
Vice President, Operations

Jacqueline R. Wetenhall  
Director, Retail Development

Evan Buechler  
Coordinator, Operations & Retail

Kate Cook  
Manager, Events & Marketing

Annette Einhorn  
Director, Events & Marketing

Marion Glowka  
Streetscape Coordinator

Geoff Hirko  
Coordinator, Events & Marketing

Maryann Rockwood  
Executive Administrator

Cheryl Vukelic  
Project Manager, Operations

Published by:

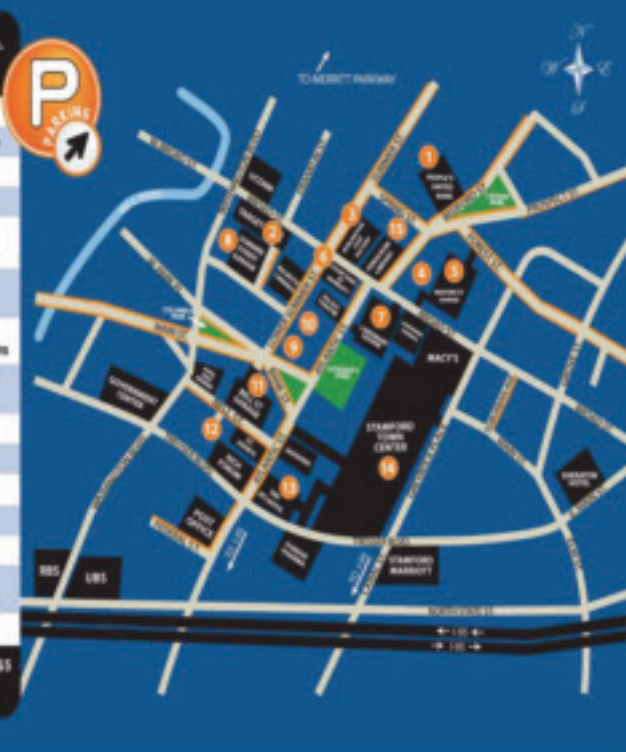
**Stamford Downtown Special Services District**  
Five Landmark Square, Suite 110, Stamford, CT 06901  
Tel: (203) 348-5285 Fax: (203) 348-6857  
www.stamford-downtown.com

**Publisher:** Sandy Goldstein  
**Editor:** Evan Buechler

On-Street Meters \$1/Hour in effect 8am-6pm, Mon-Sat, Sundays Free.

Facility	Enter From	Rates
1 People's United Bank Lot	Bedford Street	\$1/HR - Thu-Fri-Sat only
2 Target	Broad Street	\$1/ First 2 Hrs, then \$2/HR - \$11/Day
3 Burlington Coat Factory	Summer Street	FREE to BCF Customers
4 Bedford Street Lot	Broad or Forest	\$1/Hour
5 Bedford Street Garage	Broad or Forest	\$1/Hour - \$10/Day-\$20/Evening Sat and Sun Free until 5pm
6 Courtyard by Marriott Hotel Only	Lower Summer	Weekend \$5/HR - \$14/Day Week & Evng \$10
7 Landmark Square	Atlantic or Broad	Weekend \$10/HR - \$14/Day Week & Evng \$10/HR 3 Hrs - \$25/HR
8 Summer Place Garage	Lower Summer, Broad or Wash. Blvd, Northbound	\$1/Hour - \$10/Day - \$20/Evening Sat and Sun Free until 5pm
9 Wells Fargo Bank Garage	Lower Summer	\$2/Hour - \$10/Day/Eveng & Week
10 Park Square West Garage	Lower Summer	\$1/Hour
11 Bell Street Garage	Bell or Clark	\$1/Hour - \$10/Day - \$20/Evening*
12 St. John's Lot	Bell Street	\$1/Hour
13 200 Atlantic Street Garage	Treasure Blvd	\$2.50/Hour - \$15/Day - \$30/Even
14 Stamford Town Center	Atlantic, Treasurer or Grayrock	\$1.00 for 3 Hours - Free Sun
15 Spring Street Lot	Spring Street	\$2/Hour (up to 2 hrs), \$5/HR

\* Evening Flat Rate: Earlybird, enter after 5pm/\$3 - Peak, enter after 10pm/\$5  
City garage #s 4, 8 & 11 are open 24/7.  
All rates are subject to change without notice.

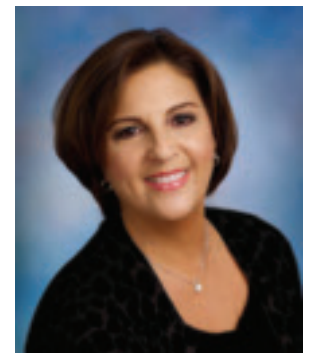


## Jami Sherwood: Stamford Citizen of the Year

The Stamford Downtown Special Services District has many people to thank throughout the year for the hard work they do on numerous events. Whether it is Alive@Five or the UBS Parade Spectacular, one individual is always first to volunteer her services. Jami Sherwood has done volunteer work on the DSSD's signature events for years. She somehow finds the time amid the myriad of other volunteer projects she does, all the while running her own business, Simply Signs. Now, the city of Stamford has recognized her hard work as Fred Robins Post 142 of the Jewish War Veterans honors her as the 68th annual Stamford Citizen of the Year for her work within the community during 2012.

In 2000, Jami was roped into helping at Alive@Five. That served as the gateway to her donating her time to the DSSD throughout the past thirteen event seasons. During that time, the balloon parade has become her favorite event. "I get so much pleasure out of watching the faces of all the children and their families watching the balloons and the marching bands," Sherwood says. "It is a huge event and the DSSD makes it look so simple, but there is so much work and planning that goes into it," she admits.

Jami has been an integral part of every event for over a decade and is already continuing that trend this year. The Stamford Downtown Special Services District thanks Jami Sherwood for her numerous contributions and congratulates her on her Citizen of the Year award.

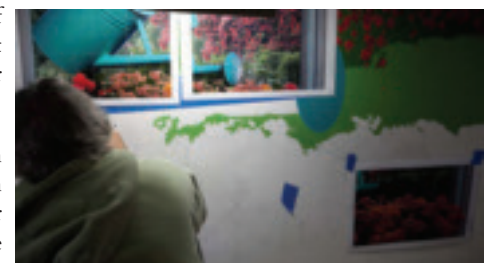


Jami Sherwood: 2012 City of Stamford Citizen of the Year

## "Blazing Blooms" Urban Canvas Mural

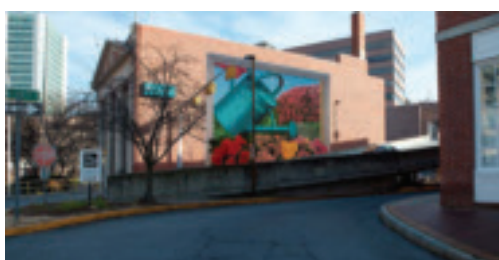
If you stroll down Atlantic Street and stop at the corner of Main, you might find yourself immersed in the newest Stamford Downtown permanent outdoor art display, our urban canvas mural, "Blazing Blooms," by Scott Glaser.

It hangs on the south-facing wall of First County Bank on Atlantic Street, overlooking the ramp to the Stamford Town Center garage and measures 31 feet x 41 feet. In 2011, Glaser was chosen after a juried process, to complete a massive piece of art that would visually engage the community. Glaser's subject is a lush world of plants and greenery, sitting amidst the concrete jungle. The painting tricks the eye (*trompe l'oeil*) and creates the optical illusion of a three dimensional mural. The style for the "Blazing Blooms" painting is 'Surrealism meets Realism,' explains Glaser.



Scott Glaser using a grid system

Although the mural looks like an enlarged photograph, the final "sketch" was created by juxtaposing Glaser's photograph of a gloved hand holding a watering can with his reference photos of begonias and kalanchoes in the foreground, rhododendrons in the background and a window box and window pane framing it all.



Blazing Blooms, By Scott Glaser

The large size of the canvas, took eight months to complete and required the painting to be scanned in sixteen separate pieces, then pieced together like a puzzle in a computer and made ready for the printer. Donald Sigovich, a fine art printing and scanning service in Westport, spent two weeks assembling, color correcting, and proofing the final four gigabyte file in order to achieve the most faithful interpretation of the original. Once completed, this file was given to the large format printer to create the finished 31 foot x 41 foot mural.

Special thanks to Marion Glowka, Stamford Downtown Streetscape Coordinator, floral advisor, hand model and stylist for the photo shoot and to Sam Bridge Nursery, the resource for the flower research.



Chocopologie

## Retail Corner: New Retailers and Restaurants in Stamford Downtown

During the past few months, several new restaurants and retailers have opened their doors in Stamford Downtown. Wine bars, chocolatiers and mixed martial arts studios are now thriving here.

The Columbus park region has seen significant growth. Cotto Wine Bar and Pizzeria brings a homemade Italian flair to Bank Street. Its house-made pastas and sauces coupled with a selection of over 400 wines are sure to please even the most discerning palate. Just down the road on Main Street, Chocopologie is busy making unique Knipschildt chocolates and desserts sure to delight your palate. Owner Fritz Knipschildt, trained and worked all over Europe before bringing his unique creations to our shores in the 1990s.

Making our way up lower Summer Street, newly opened LA Boxing is sure to catch your eye. The boxing and mixed martial arts gym provides a new way for Stamfordites to stay in shape. Its specialized workout can burn up to 1,000 calories in an hour. However, if you would rather tango with your partner than throw punches at them, Dance With Me, on lower Summer Street, offers dance instruction from the studio that brought Maks, Val and Tony to television's "Dancing with the Stars."



LA Boxing



Light roasted, new wave coffee at Lorca

To replenish your body post-workout, stop by Top This on Atlantic Street for a healthy choice of juice, smoothies, salads and sandwiches. If you are serious about juicing, take a trip up Summer Street to Elixir, where they will put together a juice detox plan to rejuvenate your body.

Start or wrap up your day with a spectacular cup of coffee at Lorca on Bedford Street, which offers light roasted, new wave coffee along with churros created by an owner who learned the trade in Spain.

The contributions of restaurants and retailers like these and their proprietors make the culture of Stamford Downtown unique. Give these places a try and see for yourself how Stamford Downtown is changing and growing!

## DSSD Ambassador- Spotlight on Bob Cornell

In bright yellow jackets, on bike or on foot, you'll notice our Stamford Downtown Ambassadors. They work hard to make the Downtown more accessible and welcoming to residents and visitors alike. Always ready to provide directions or assist someone in need, the Ambassadors make Stamford Downtown a better place to live, work and play.

Bob Cornell is one of six other ambassadors who patrol Stamford Downtown. This is Bob's second year as a Stamford Downtown Ambassador and he hopes to continue for many more.

"This is the best job because I get to work with people," says Bob. And it shows. Bob has been affectionately referred to as "Ambassador Bob," by many in the Downtown. He loves his job. Bob explained, "It's a lot of customer service. Its interpersonal relations with all different types of people I meet on the street. I meet important officials, out of town visitors, and regular Stamfordites. What I like is that I am always learning. The DSSD has taught me many things and has been an inspiration."

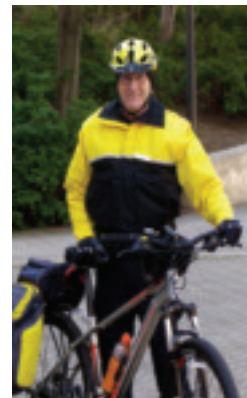
Bob warmly refers to some of his fellow Ambassadors as some of the best people. "We are like a family--we try to motivate each other. We motivate with PMA- "Positive Mental Attitude."

Prior to working at Allied Barton, for the Stamford Downtown Special Services District, he was a Supervisors Training Officer for a major medical facility for 10 years. He was lured to Stamford's Ambassador Program because of his love for bikes and the "bike patrol" program. Bob rides whenever weather permits. Some days he can clock in 50-75 miles during an eight hour shift.

He is not without accolades. Recently, Bob was named Allied Barton's Security Officer of the Month as well as Trooper of the Year from CT National.

New ideas come to him all the time. With Bob's input, Park on Us, a give-a-quarter program is in full swing. Park on Us allows Ambassadors to offer a quarter to visitors who appear unable to find money for their meter, hence, averting a parking fine.

Bob prides himself on the fact that he pays attention to what goes on around him. Should there be an unattended child, lost visitor, graffiti incident, an unruly crowd or anything else, Ambassador Bob will notice and assist.



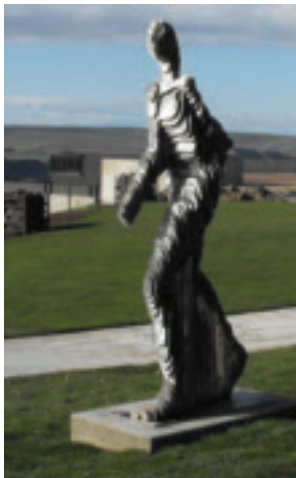
Bob Cornell

## Art in Public Places, *Downtown Abstractions*

There will be art adorning the streets of Stamford Downtown this summer as forty sculptures are placed throughout the District. *Downtown Abstractions* presented by SAC Capital Advisors, L.P. features sculptures by renowned artists from across the country, all of which will be on display on key Downtown streets and in the Stamford Town Center, June through August.

Art in Public Places is currently in its 20th year and has become one of the city's premier cultural events taking place throughout Stamford Downtown. This is a summer event you won't want to miss. Art in Public Places is a showcase of exceptional art.

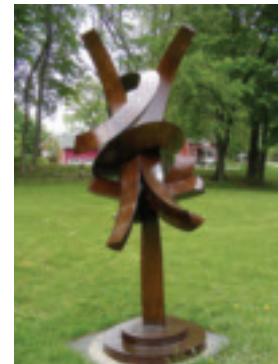
For more information or a map of exhibit locations, please call the DSSD at 203-348-5285 or check our website at [www.stamford-downtown.com](http://www.stamford-downtown.com) in mid-May.



Julian Voss Andrea



Downtown Abstractions Logo



David Boyajian

Visit Stamford Downtown's Blog and Facebook

<http://stamforddowntownevents.blogspot.com>

<http://www.facebook.com/stamford.downtown>

# Stamford Downtown Events, Summer 2013

## Downtown Abstractions, Art in Public Places

June-August, 2013

Each year Stamford Downtown hosts a distinguished outdoor sculpture exhibit designed to attract both local and regional audiences. Art in Public Places features sculptures lining the sidewalks and parks of the Downtown as well as the Stamford Town Center.

## French Market (Farmers' Market)

June-November, 2013

Bedford Street at Forest-Saturdays

Visit our farmers' market with vendors offering the freshest fruits, vegetables, flowers, baked goods and more! Straight from the farm and right to your home.

## ARTWALK in Stamford Downtown

June 14-15, 2013

Art work from professional artists will be displayed in stores on a walking route of the Downtown.

## Alive@Five Outdoor Summer Concert Series

Thursday Evenings, June 20, 27, July 11, 18, 25, August 1, 8, 15, 2013

(No Concert July 4)

5:00 pm, Columbus Park

Live music from national and regional headliners, which attracts after work crowds and families. Thursday nights in Columbus Park have become a ritual in Stamford Downtown with great music, great dancing and great times!

### Alive@Five:

June 20: The Wallflowers

June 27: The Mavericks

July 11: Ryan Cabrera

July 18: Wynonna & The Big Noise

July 25: Bret Michaels Life Rocks 2013

August 1: Matt Nathanson

August 8: Howie Day

August 15: Michael McDonald

## Jazz Up July

Wednesday Evenings, July 10, 17, 24, 31, August 7, 2013

Summer sizzles in Stamford Downtown with a hot jazz series in Columbus Park.

July 10: Bernie Williams

July 17: Brubeck Brothers Quartet

July 24: Poncho Sanchez and his Latin Jazz Band

July 31: An Evening with Dianne Reeves

Aug 7: Chick Corea & the Vigil with Christian McBride, Tim Garland,  
Charles Altura & Marcus Gilmore

## A Grand Summer Night, Dine Around

August 14, 2013

Organized by the "Friends of Stamford Downtown" this annual fund-raiser salutes fine dining in Stamford Downtown. Call 203-348-5285 for an invitation.

## Stamford Tables Summer Restaurant Weeks

August 18-September 2, 2013

Stamford Restaurant Weeks is a great way to celebrate the summer with specially priced menus.

## Arts & Crafts on Bedford

September 21 & 22, 2013

Shop at our craft and artisan boutiques on Bedford Street, which will be closed to traffic for the weekend. Dine at our extended sidewalk cafés.

## Come Join the Fun!

Mill River Gala – May 2, 2013, 5:15 pm at Mill River Park

Citizen of the Year Dinner for Jami Sherwood – May 7, 2013, 6:00 pm at the Italian Center of Stamford

American Cancer Society Roast of Sandy Goldstein – May 15, 2013, 6:00 pm at the Italian Center of Stamford

Stamford Center for the Arts Gala Starring Steve Martin and the Steep Canyon Rangers featuring Edie Brickell

– June 1, 2013, at 6:00 pm at the Palace Theatre