

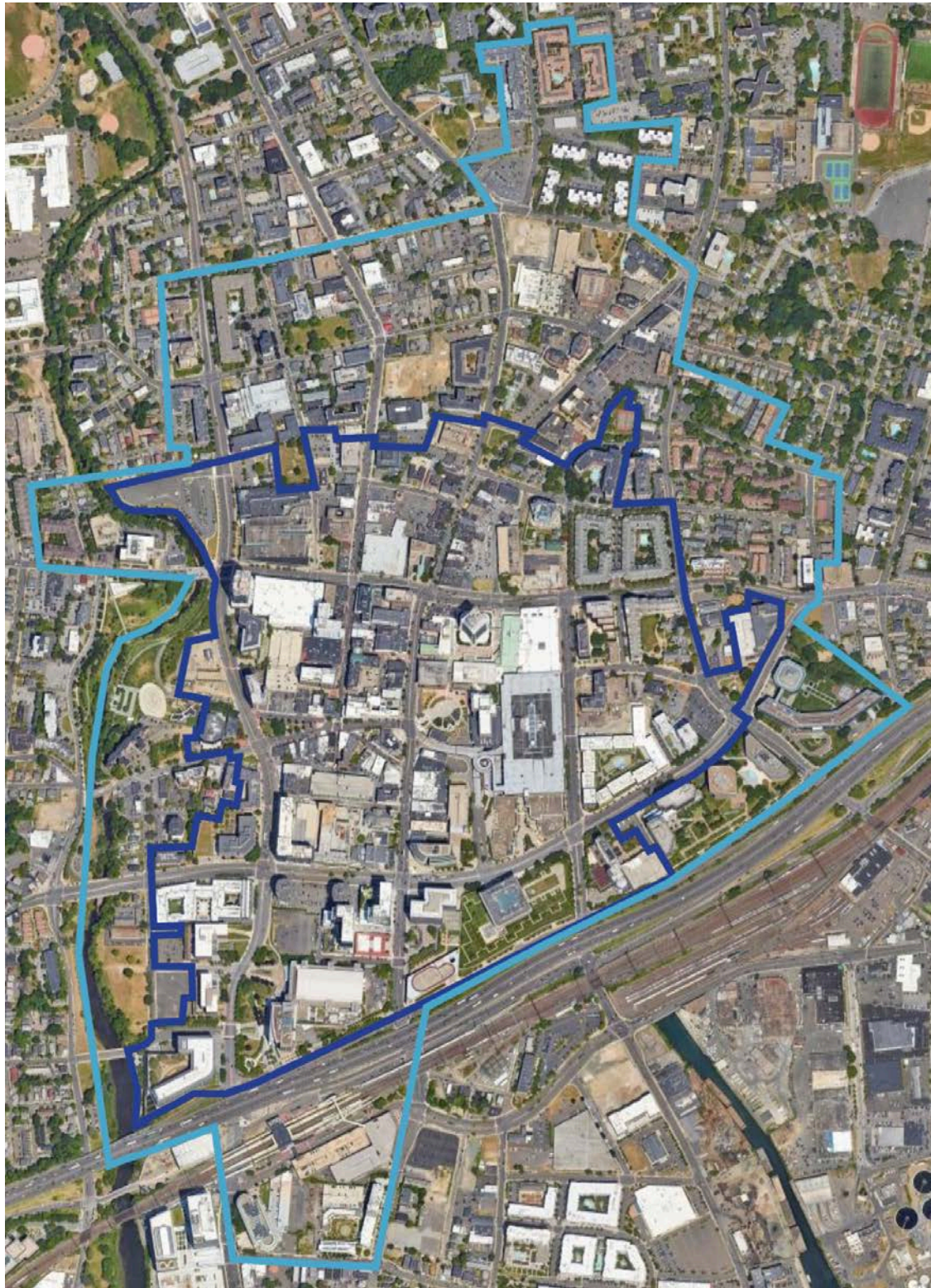


**1996 – NOW**

# **RESIDENTIAL DEVELOPMENT**

**STAMFORD DOWNTOWN BUILDING INVENTORY**

# STAMFORD DOWNTOWN AND GREATER DOWNTOWN BOUNDARIES



- Stamford Downtown District
- Greater Downtown (outside of District)

# RESIDENTIAL INVENTORY

## AT A GLANCE (PRE 1996 – NOW)

Recently Completed	2021 – 2024 Units
Atlantic Station West	325
URBY Stamford (Phase II)	176
The Smyth	414
One Atlantic	77
Life Time Living Stamford	291
The Asher	228
<b>Total Completed Units</b>	<b>1,511</b>

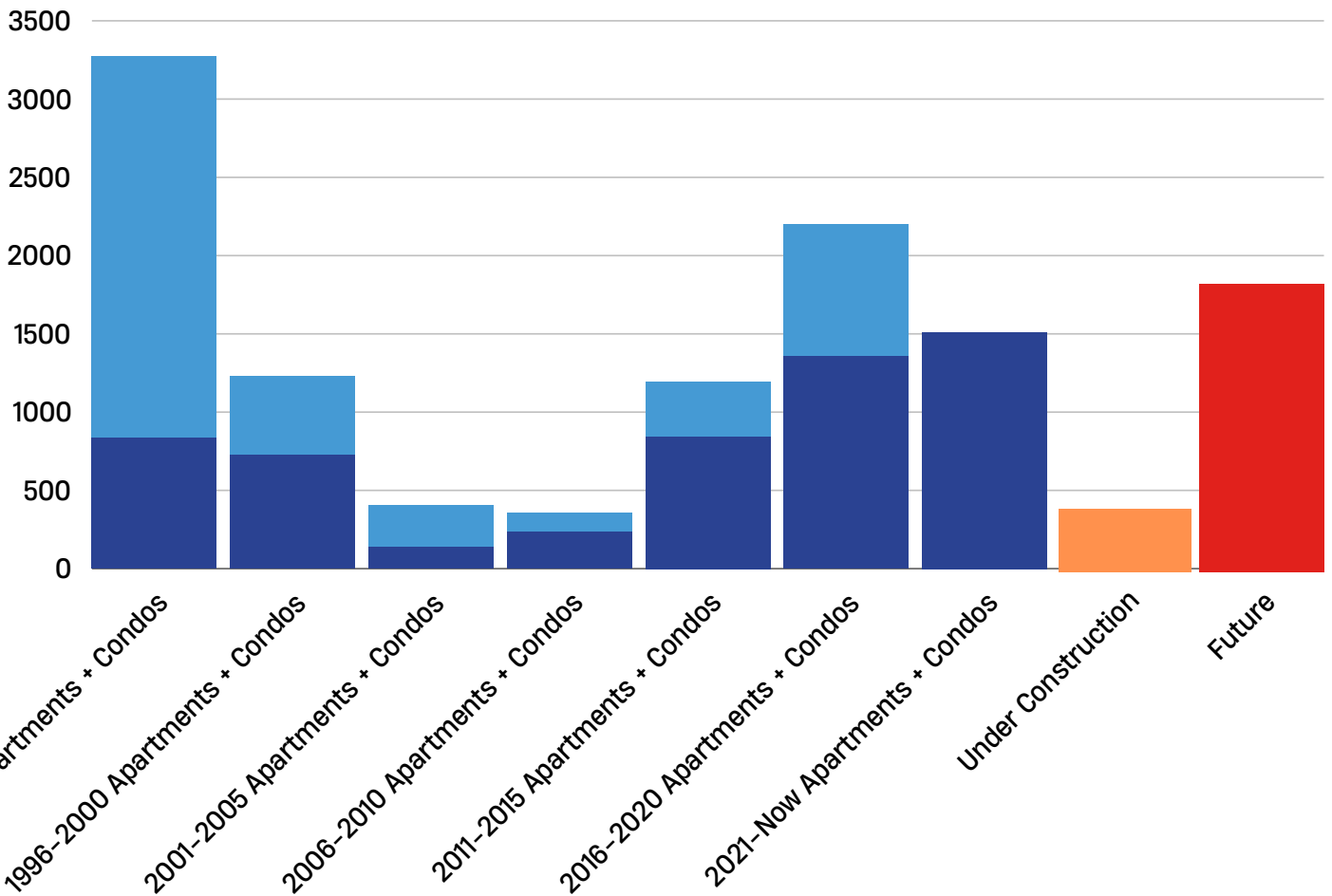
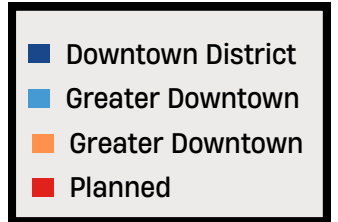
Under Construction	2024 Units
Julius*	376
<b>Total Under Construction Units</b>	<b>376</b>

Planned w/Land Use Approvals	2024 Units
100 Clinton*	471
677-707 Washington	406
780 Summer*	73
0 Walton Place & 80 Prospect*	224
128 Broad	198
3 Landmark	400
589 Bedford*	21
<b>Total Planned Units</b>	<b>1,793</b>

\* = in the Greater Downtown (outside of District)

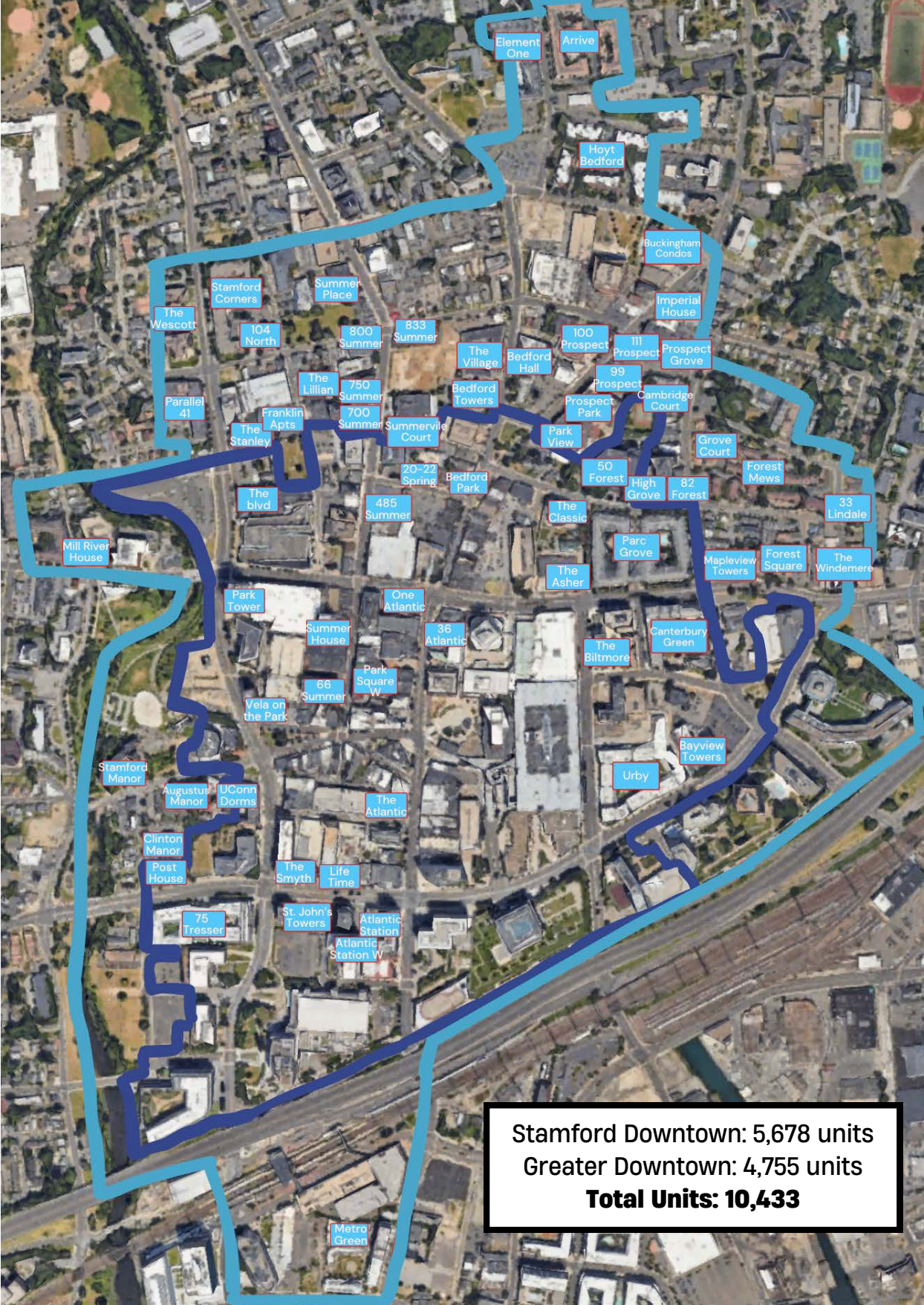
# RESIDENTIAL INVENTORY AT A GLANCE (PRE-1996 - NOW)

## Apartments & Condominiums Built Within Greater Downtown



# APARTMENTS UNITS OPENED

Pre-1996 - 2023



## RECENTLY COMPLETED



### **THE SMYTH**

#### **100 Tresser Boulevard**

414 residential units and  
19,333 sf retail

Quarterra



### **LIFE TIME LIVING STAMFORD**

#### **130 Tresser Boulevard**

291 residential units  
and athletic facility

True North LLC



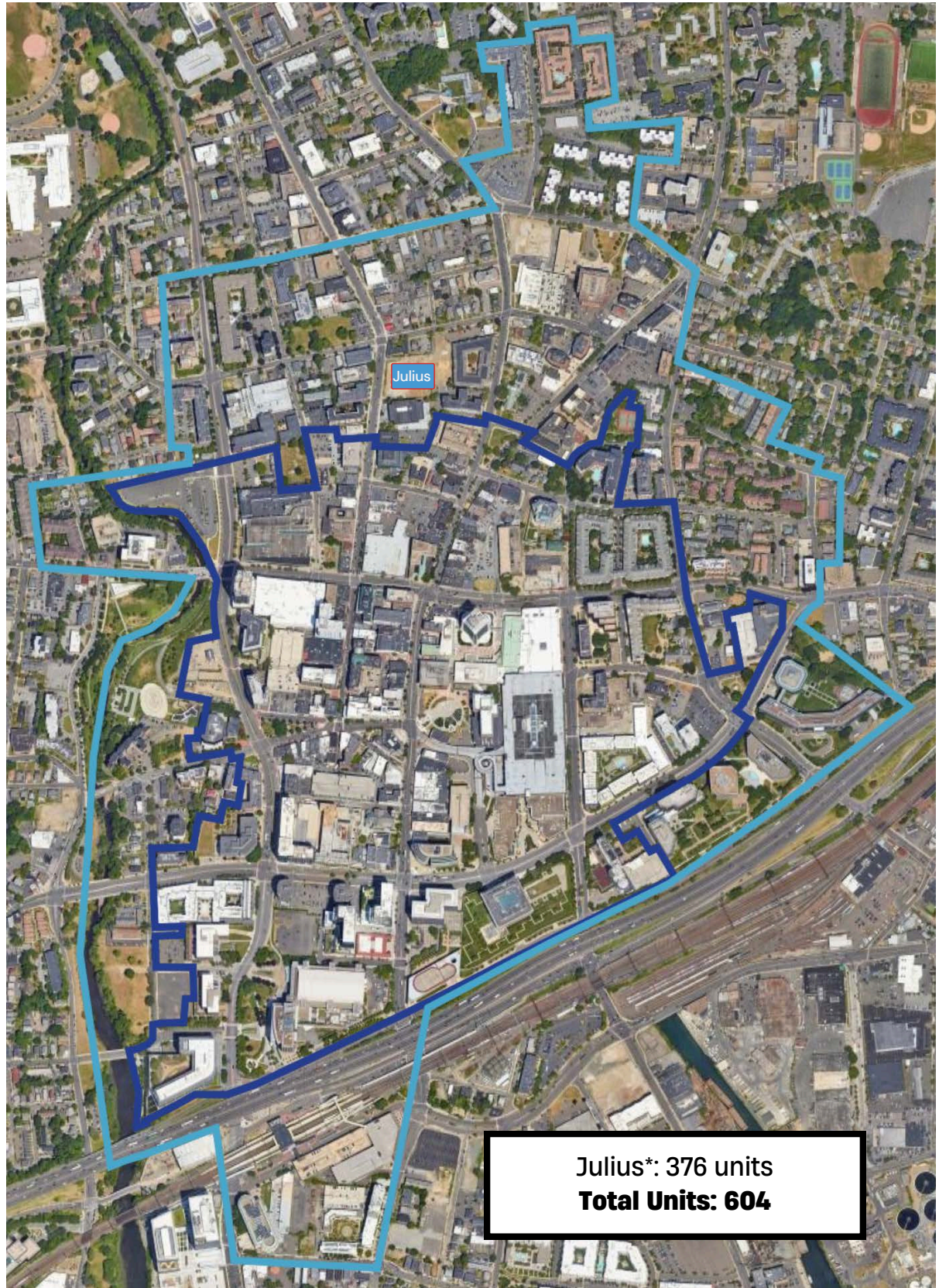
### **THE ASHER**

#### **150 Broad Street**

228 residential units  
and 8,000 sf office

RMS Properties

# APARTMENTS UNDER CONSTRUCTION



\* = in the Greater Downtown

**UNDER CONSTRUCTION**



**JULIUS\***

**777 Summer Street**

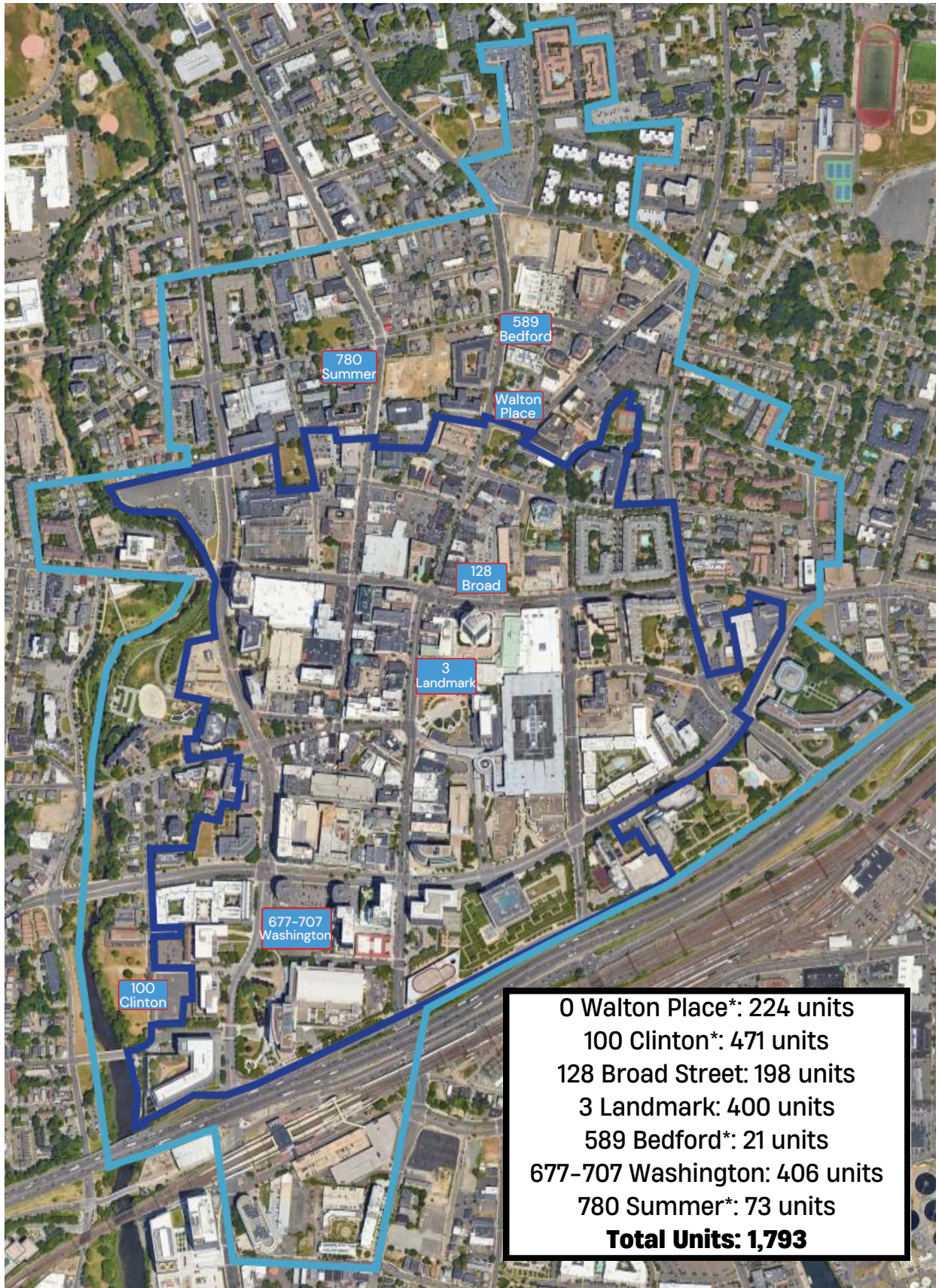
376 units

Summer Street Property, LLC

\* = in the Greater Downtown



# APARTMENTS PLANNED WITH LAND USE APPROVALS



\* = in the Greater Downtown

## PLANNED WITH LAND USE APPROVALS



### **0 WALTON PLACE & 80 PROSPECT\***

#### **0 Walton Place / 80 Prospect Street**

224 units

Walton Place LLC and  
80 Prospect Street Partners LLC



### **100 CLINTON\***

#### **Division Street / Clinton Avenue**

471 units

CP VIII 100 Clinton LLC

\* = in the Greater Downtown

# PLANNED WITH LAND USE APPROVALS



## **128 BROAD**

### **128-136 Broad Street**

198 units

TR BROAD II LLC



## **3 LANDMARK**

### **3 Landmark Square**

400 units and 5,000 sf  
ground floor retail

Capelli Organization

# PLANNED WITH LAND USE APPROVALS

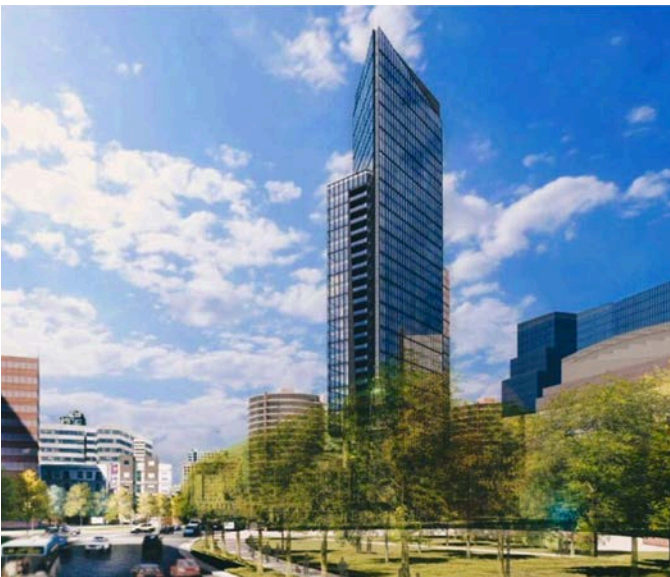


## **589 BEDFORD\***

**589 Bedford Street**

21 units

Aivalis Architects & Developers



## **677-707 WASHINGTON**

**677-707  
Washington Boulevard**

406 units and ground floor retail

Stamford Washington LLC



## **780 SUMMER\***

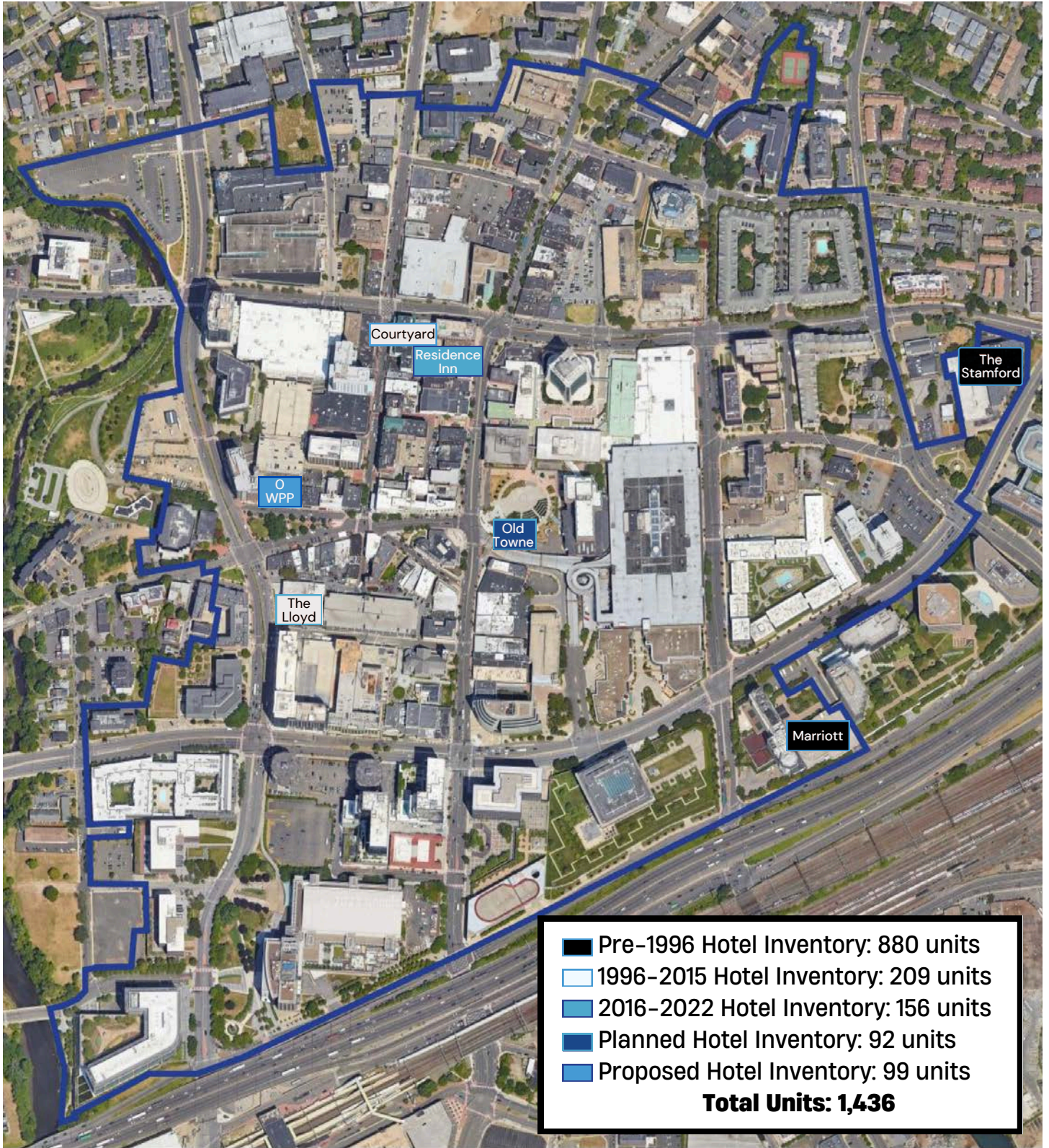
**780 Summer Street**

73 units

780 Summer St. LLC

\* = in the Greater Downtown

# STAMFORD DOWNTOWN HOTEL OVERVIEW 1996–Now



# PLANNED DEVELOPMENT



## **OLD TOWNE HOTEL**

**160 Atlantic Street**

92 hotel units

AWA Design Group

# PROPOSED DEVELOPMENT



## **0 WEST PARK PLACE**

### **0 West Park Place**

99 room extended stay hotel in a  
10-story building with ground  
level retail/restaurant space  
and associated amenities

Wellbuilt Company