



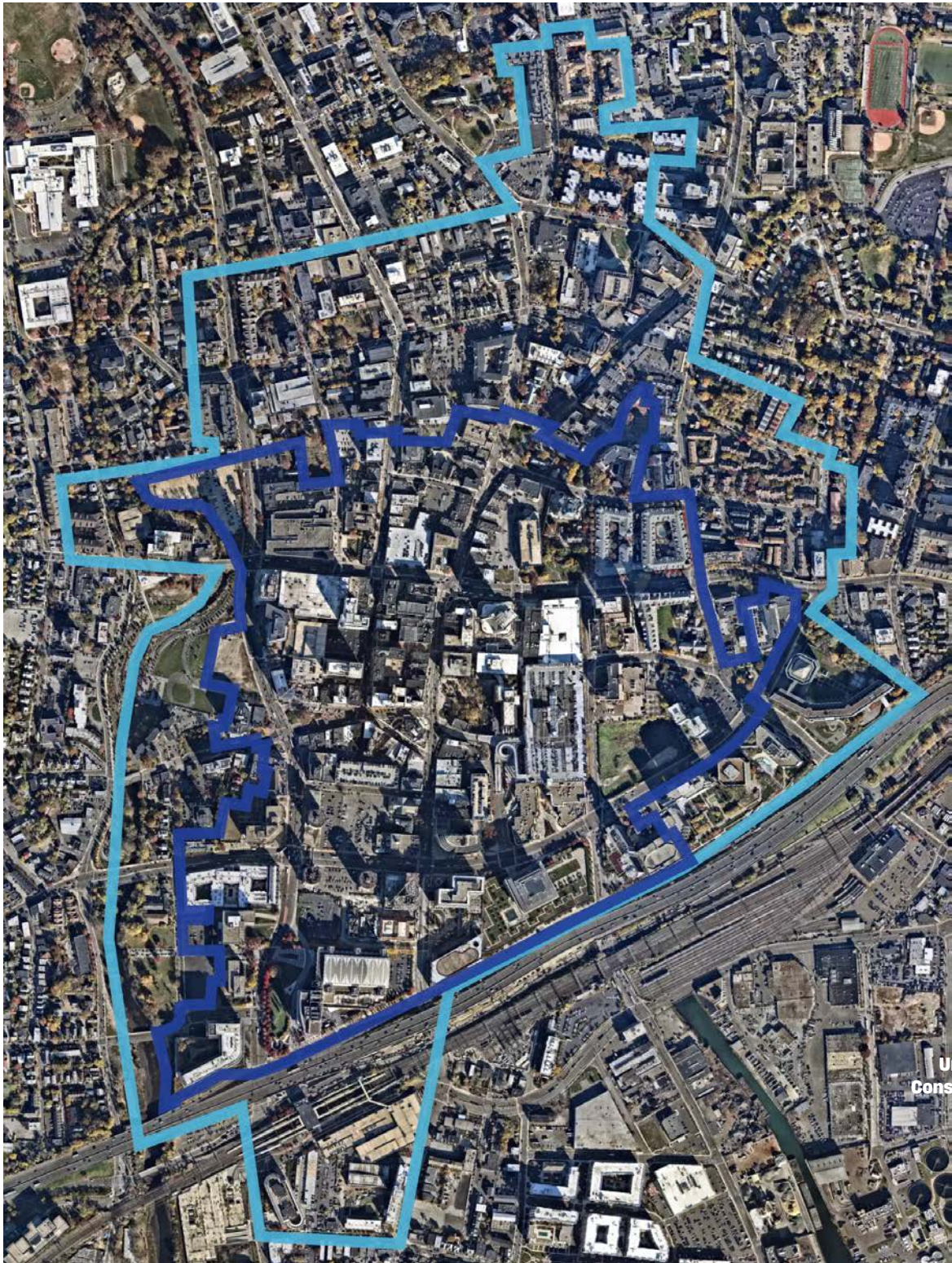
**1996 – NOW**

# **DEVELOPMENT ON THE MOVE**

**STAMFORD DOWNTOWN BUILDING INVENTORY**



# STAMFORD DOWNTOWN AND GREATER DOWNTOWN BOUNDARIES



- Stamford Downtown District
- Greater Downtown (outside of District)

# RESIDENTIAL INVENTORY

## AT A GLANCE (PRE 1996 – NOW)

Recently Completed	2020 – 2023 Units
36 Atlantic Street	20
URBY Stamford (Phase I)	465
Atlantic Station West	325
URBY Stamford (Phase II)	176
The Smyth	414
One Atlantic	77
<b>Total Completed Units</b>	<b>1,477</b>

Under Construction	2023 Units
The Asher	228
733-777 Summer*	376
Life Time Living Stamford	291
<b>Total Under Construction Units</b>	<b>895</b>

Planned w/Land Use Approvals	2023 Units
100 Clinton*	471
677-707 Washington	406
780 Summer*	73
0 Walton Place & 80 Prospect Street*	224
128 Broad Street	198
3 Landmark Square	400
<b>Total Planned Units</b>	<b>1,772</b>

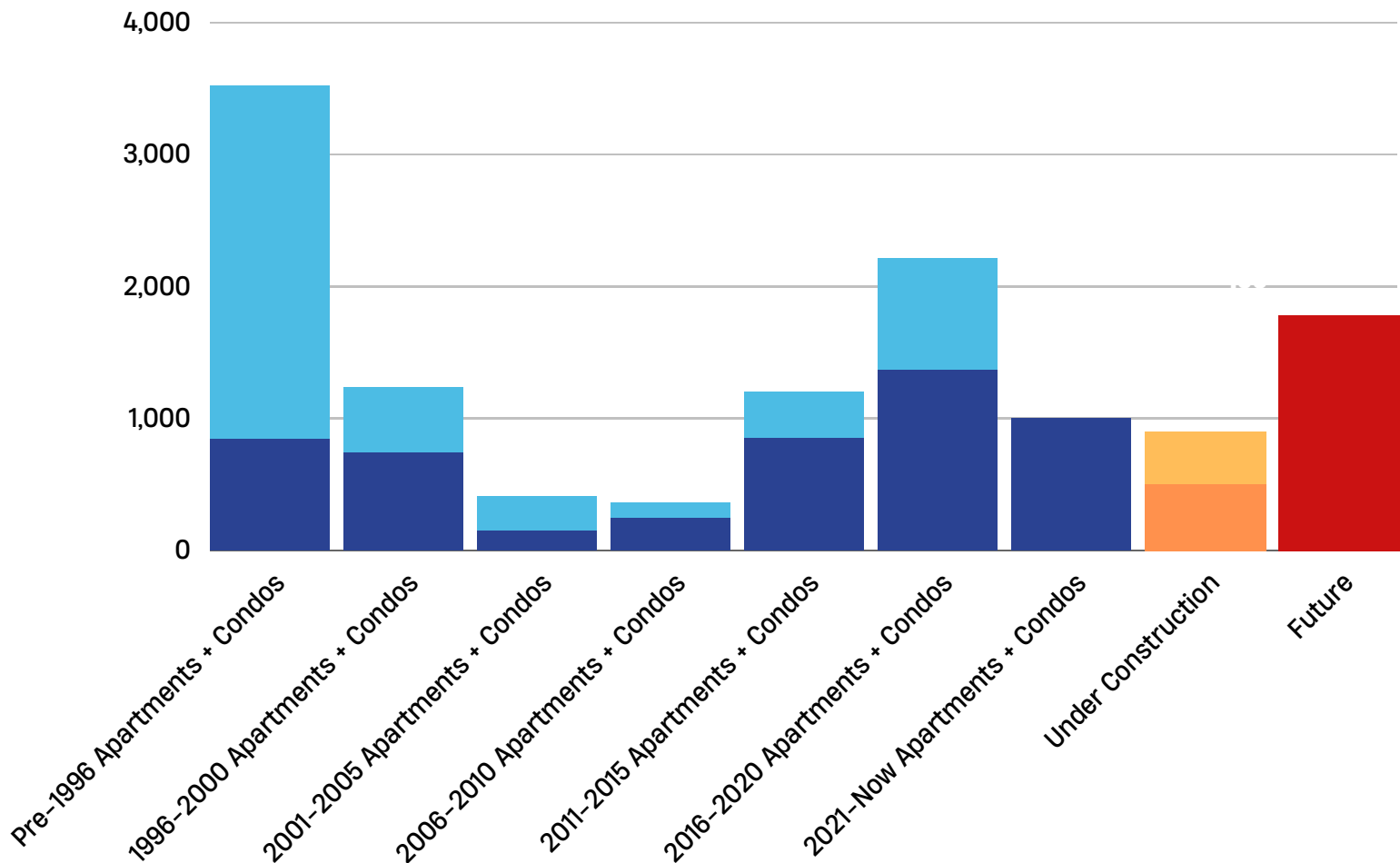
\* = in the Greater Downtown (outside of District)



# RESIDENTIAL INVENTORY

## AT A GLANCE (PRE-1996 - NOW)

### Apartments & Condominiums Built Within Greater Downtown



- District
- Greater Downtown
- District
- Greater Downtown
- Planned

# APARTMENTS UNITS OPENED

## 2018-2023

Atlantic Station	325 units
------------------	-----------

Vela on the Park	209 units
------------------	-----------

URBY Stamford (Phase I)	465 units
-------------------------	-----------

36 Atlantic	20 units
-------------	----------

Atlantic Station West	325 units
-----------------------	-----------

URBY Stamford (Phase II)	176 units
--------------------------	-----------

The Smyth	414 units
-----------	-----------

One Atlantic	77 units
--------------	----------

<b>TOTAL UNITS</b>	<b>2,011</b>
--------------------	--------------

## RECENTLY COMPLETED

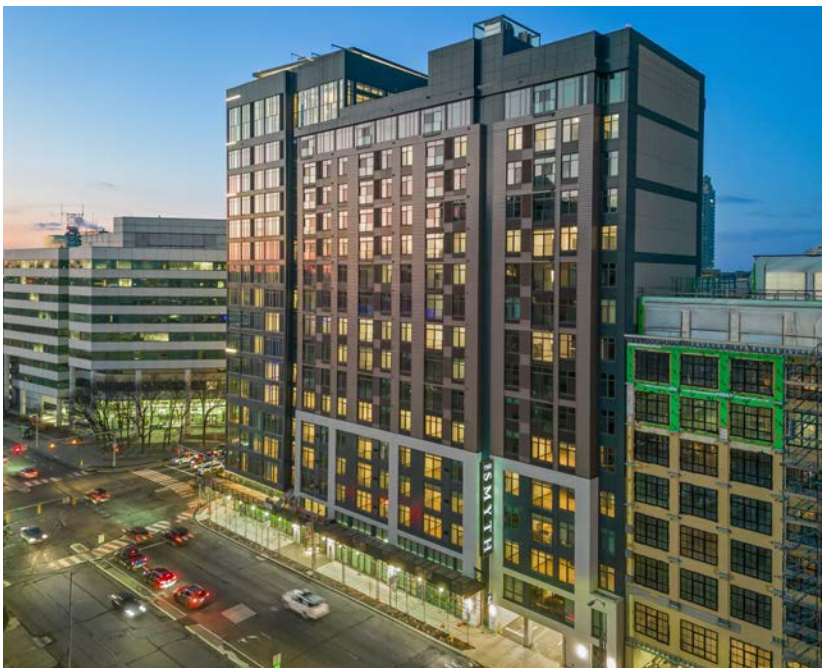


### **URBY STAMFORD (PHASE II)**

**1 Greyrock**

176 units

Ironstate Development



### **THE SMYTH**

**100 Tresser Boulevard**

414 residential units and  
19,333 sf retail

Lennar Multifamily

## RECENTLY COMPLETED



### **ONE ATLANTIC**

#### **1 Atlantic Street**

Convert existing commercial to  
77 residential units  
and ground floor retail

SH Atlantic LLC

# APARTMENTS UNDER CONSTRUCTION

The Asher	228 units
-----------	-----------

733-777 Summer*	376 units
-----------------	-----------

Life Time Living Stamford	291 units
---------------------------	-----------

<b>TOTAL UNITS</b>	<b>895</b>
--------------------	------------

\* = in the Greater Downtown



# UNDER CONSTRUCTION



## **THE ASHER**

**150 Broad Street**

228 residential units  
and 8,000 sf office

RMS Properties



## **773-777 SUMMER\***

**733-777 Summer Street**

376 units

Summer Street Property, LLC

\* = in the Greater Downtown

**UNDER CONSTRUCTION**



**LIFE TIME  
LIVING STAMFORD**

**130 Tresser Boulevard**

291 residential units  
and athletic facility

True North LLC

# APARTMENTS PLANNED WITH LAND USE APPROVALS

100 Clinton*	471 units
677-707 Washington	406 units
780 Summer*	73 units
0 Walden Place & 80 Prospect St*	224 units
128 Broad Street	198 units
3 Landmark Square	400 units
<b>TOTAL UNITS</b>	<b>1,772</b>

\* = in the Greater Downtown

## PLANNED WITH LAND USE APPROVALS



### **100 CLINTON\***

**Division Street /  
Clinton Avenue**

471 units

CP VIII 100 Clinton LLC



### **677-707 WASHINGTON**

**677-707  
Washington Boulevard**

406 units and ground floor retail

Stamford Washington LLC

\* = in the Greater Downtown



## PLANNED WITH LAND USE APPROVALS



### **780 SUMMER\***

#### **780 Summer Street**

73 units

780 Summer St. LLC



### **0 WALDEN PLACE & 80 PROSPECT STREET\***

#### **0 Walden Place / 80 Prospect Street**

224 units

Walton Place LLC and  
80 Prospect Street Partners LLC

\* = in the Greater Downtown

## PLANNED WITH LAND USE APPROVALS



### **128 BROAD STREET**

**128-136 Broad Street**

198 units

TR BROAD II LLC



### **3 LANDMARK SQUARE**

**3 Landmark Square**

400 units and 5,000 sf  
ground floor retail

Capelli Organization

# STAMFORD DOWNTOWN HOTEL OVERVIEW

## 1996–Now

Hotel Inventory Pre-1996	974
--------------------------	-----

Hotel Units: Completed 1996–2015	115
----------------------------------	-----

Hotel Units: Completed 2018–2022	156
----------------------------------	-----

Hotel Units: Proposed 2023	195
----------------------------	-----

<b>TOTAL HOTEL UNITS</b>	<b>1,440</b>
--------------------------	--------------

## PROPOSED DEVELOPMENT



### **OLD TOWNE HOTEL**

**160 Atlantic Street**

Approx. 100 hotel units

AWA Design Group



### **PARK SQUARE WEST III**

**66 West Park Place**

95 room extended stay hotel in a  
10-story building with ground  
level retail/restaurant space and  
associated amenities

Wellbuilt Company