

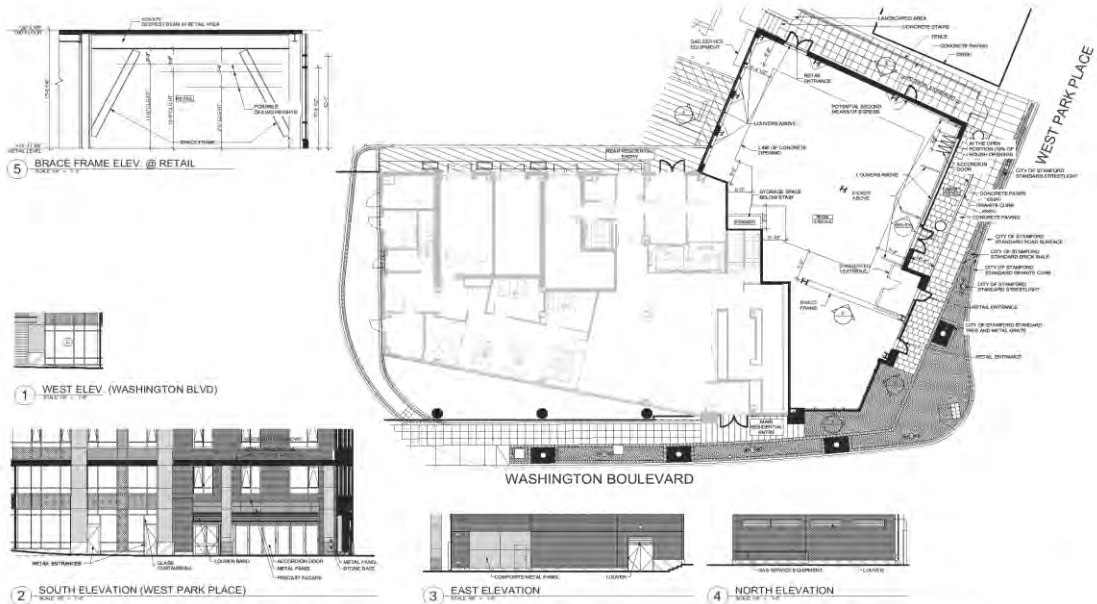
VELA

ON THE PARK



- 1,125 SF, WITH PATIO OPPORTUNITY
- 38 feet of Frontage
- 209 LUXURY RESIDENTIAL UNITS
- 0.5 MILES FROM STAMFORD TRANSPORTATION CENTER
- ADJACENT TO STAMFORD'S SUMMER PLACE MUNICIPAL GARAGE; WITH 482 PUBLIC PARKING SPACES
- ANTICIPATED DELIVERY Q1 2019

1011 WASHINGTON BOULEVARD, STAMFORD, CT 06901



FOR RETAIL LEASING INQUIRIES PLEASE CONTACT:
 LAURA LEEDS - SIMON DAVID REAL ESTATE
 (203) 221-8387 / LAURA@SIMONDAVIDREALESTATE.COM

